



MAHARASHTRA NATURAL GAS LIMITED

(MNGL)

**TENDER DOCUMENT
FOR
LAYING AND CONSTRUCTION OF U/G STEEL PIPELINE &
ASSOCIATED WORKS FROM PIL'S CS7 (NHAVARE) TO
HADAPSAR FOR PUNE GA.**

**UNDER OPEN DOMESTIC
COMPETITIVE BIDDING
(THROUGH E-TENDERING MODE)**

Bid Document No.: MNGL/CP/2024-25/149

VOLUME III OF III

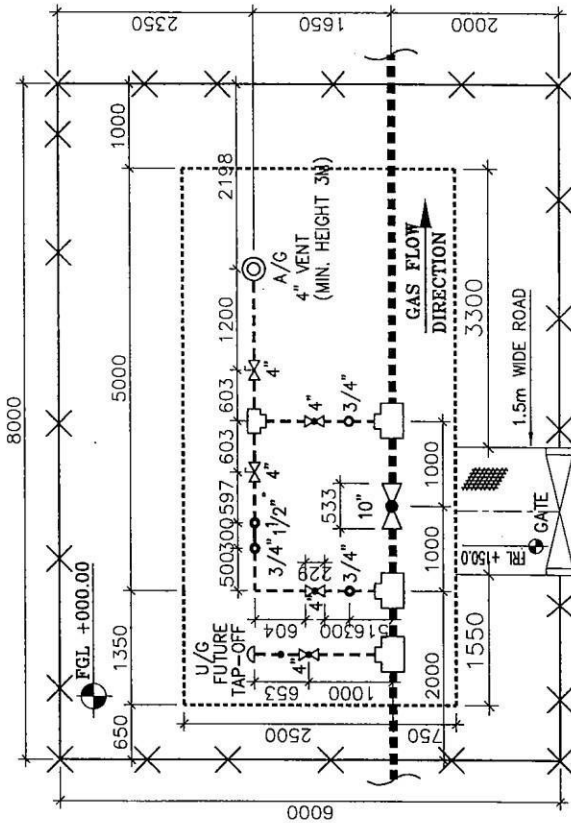
A) GENERAL PIPELINE & MECHANICAL DRAWINGS

- | | |
|--|-----------------------|
| 1. Typical Detail of SV Stations (type-I) | - MNGL/PIng./Steel/01 |
| 2. Typical Detail of SV Stations (type-II) | - MNGL/PIng./Steel/02 |
| 3. Trench cross section detail | - MNGL/PIng./Steel/03 |
| 4. Barricading | - MNGL/PIng./Steel/04 |
| 5. Cautions Board | - MNGL/PIng./Steel/05 |
| 6. Typical Detail of Marker | - MNGL/PIng./Steel/06 |

B) CP DRAWINGS

- | | |
|--|-----------------------|
| 1. Prepacked Zinc Anode | - MNGL/PIng./Steel/14 |
| 2. Magnesium Ribbon Anode for Grounding | - MNGL/PIng./Steel/16 |
| 3. Test Station with Foundation Details | - MNGL/PIng./Steel/18 |
| 4. Test Station Connection Schemes | - MNGL/PIng./Steel/19 |
| 5. Prepacked Permanent Ref. Electrode & Installation Details | - MNGL/PIng./Steel/20 |
| 6. Details of Zinc Grounding Cell | - MNGL/PIng./Steel/21 |
| 7. Pipeline Grounding through Polarization Cell & Galvanic anode | - MNGL/PIng./Steel/23 |
| 8. Galvanic Anode Installation | - MNGL/PIng./Steel/24 |
| 9. Test Station for Polarization Cell | - MNGL/PIng./Steel/27 |
| 10. Zinc Ribbon Anode for Cased Crossings with Coated Casing | - MNGL/PIng./Steel/22 |
| 11. Std. detail of backfill for Drain Crossing | - MNGL/PIng./Steel/29 |
| 12. Restoration of roads, footpath, channel | - MNGL/PIng./Steel/30 |
| 13. Vent & Drain for Line 2" & Above | - MNGL/PIng./Steel/31 |

14. Wells Installation 1 ½" & Above (1 of 2)	- MNGL/Plng./Steel/32
15. Wells Installation 1 ½" & Above (2 of 2)	- MNGL/Plng./Steel/33
16. Pressure Tapping	- MNGL/Plng./Steel/34
17. Barred Tees (12" NB x 12" NB x 4"NB)	- MNGL/Plng./Steel/37
18. Barred Tees (6" NB x 6" NB x 6"NB)	- MNGL/Plng./Steel/38
19. Barred Tees (6" NB x 6" NB x 4"NB)	- MNGL/Plng./Steel/39
20. Valve Chamber Details	
21. RCC Slab Typical Drawing	
22. PE stop off valve drawing	-MNGL/ENG/CIVIL/0A
23. Typical drawing of isolation/tap-off valve assembly	- MNGL/Plng./Steel/40
24. Typical drawing of Pig Launcher/Receiver	

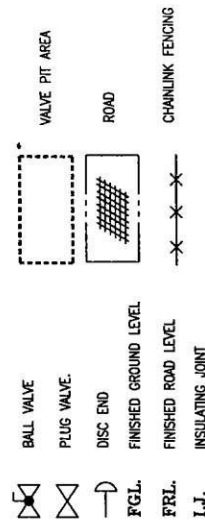


TYPE-II
SV STATION WITH A/G VENT AND TAP-OFF
TYP. PLOT PLAN WITH PLOT SIZE (8.0M x 6.0M)

BILL OF MATERIAL

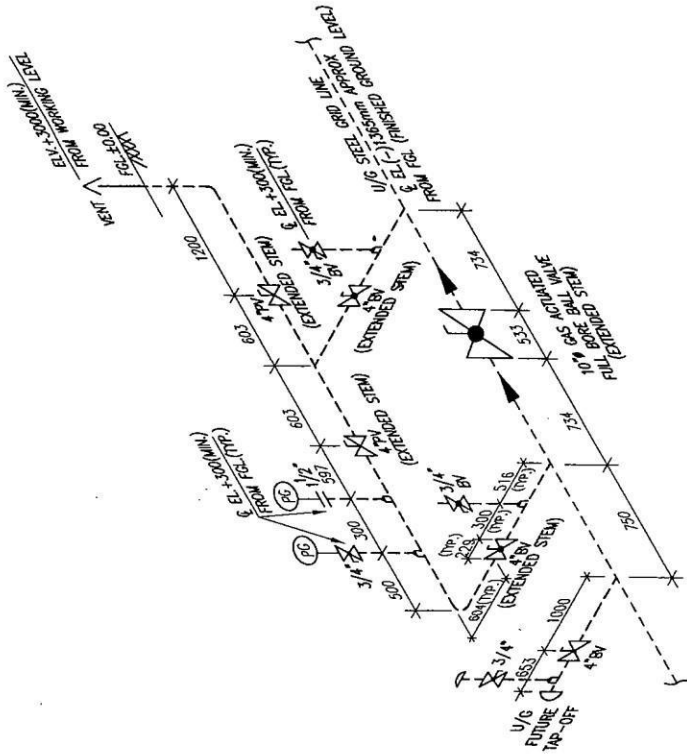
S.No.	DESCRIPTION	QTY.
1	10" BALL VALVE (EXTENDED STEM) WITH ACTUATOR	- 01 NO.
2	4" BALL VALVE (EXTENDED STEM)	- 02 NOS.
3	4" PLUG VALVE (EXTENDED STEM)	- 02 NOS.
4	4" BALL VALVE	- 01 NO.
5	3/4" BALL VALVE	- 04 NOS.
6	BARRED TEE 10"x10"x4"	- 03 NOS.
7	TEE 4"x4"x4"	- 01 NO.
8	ELBOW (1.5D) 4"	- 01 NO.

LEGEND:



NOTES:

1. ALL DIMENSIONS ARE IN MM. UNLESS OTHERWISE MENTIONED.
2. FINISHED GROUND LEVEL +0.00 CORRESPONDS TO THE TOP OF THE NEAREST EXISTING ROAD LEVEL.
3. LOCATION OF GATE SHOWN ABOVE ARE OF INDICATIVE ONLY. HOWEVER FIRM LOCATION OF GATE SHALL BE DECIDED AS PER SITE CONDITION.



TYPICAL ISOMETRIC DETAIL OF SECTIONALISING VALVE (TYPE-II)



महाराष्ट्र नैचुरल गॅस लिमिटेड
MAHARASHTRA NATURAL GAS LTD

DRG No. MNG-L Png./Spec/02

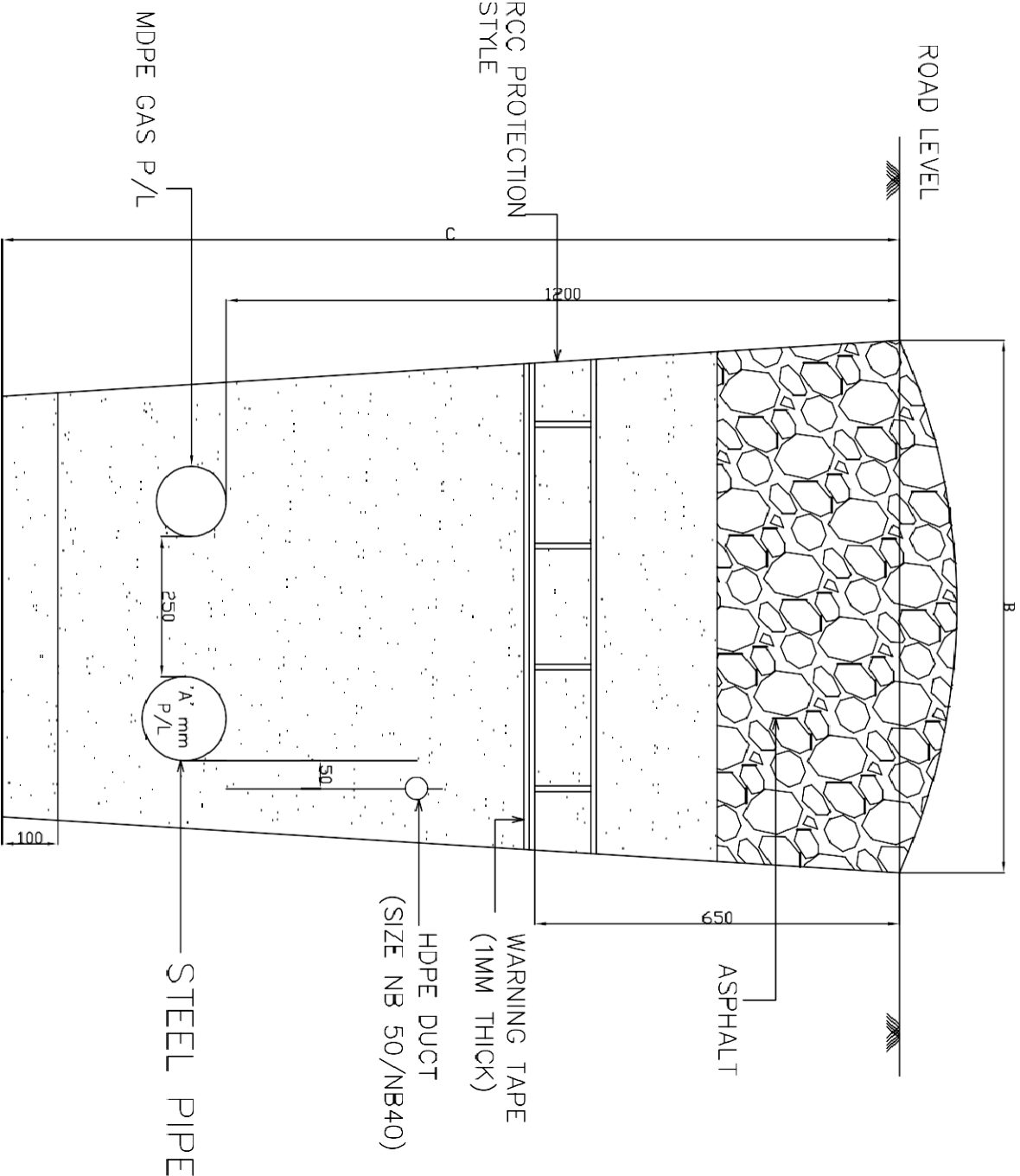
CNG & CITY GAS DISTRIBUTION IN PUNE

TYPICAL DETAIL OF SV STATION (TYPE-II)

SCALE: 1:100
DRG. NO. 0

CONVEYED BY

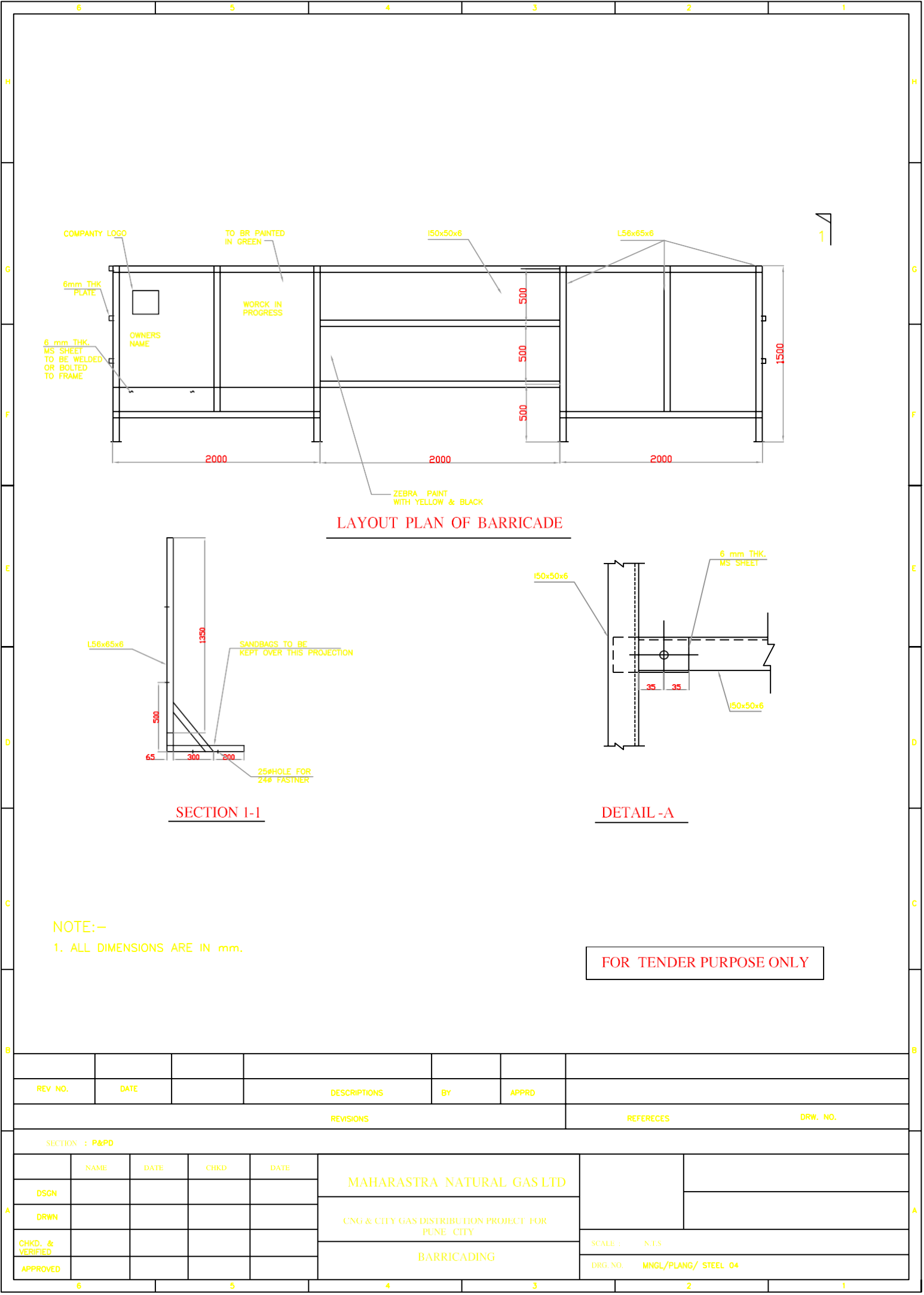
REV. INST.



'A' mm	B mm	C mm
10" NB	950 mm	1650 mm
06" MB	800 mm	1450 mm
04" NB	750 mm	1400 mm

ALL DIMENSIONS ARE IN MM

DRG. NO.- MNGL /PLANG /STEEL/ 03



LAYOUT PLAN OF BARRICADE

SECTION 1-1

DETAIL -A

NOTE:-
1. ALL DIMENSIONS ARE IN mm.

FOR TENDER PURPOSE ONLY

REV NO.	DATE		DESCRIPTIONS	BY	APPRD		
REVISIONS					REFERECES	DRW. NO.	
SECTION : P&PD							
	NAME	DATE	CHKD	DATE	MAHARAISTRA NATURAL GAS LTD		
DSGN							
DRWN							
CHKD. & VERIFIED					CNG & CITY GAS DISTRIBUTION PROJECT FOR PUNE CITY		
APPROVED					BARRICADING	SCALE : N.T.S	
						DRG. NO. MNGL/PLANG/ STEEL 04	

5 1 24 3 3 42 15

G

G

F

F

E

E

D

D

C

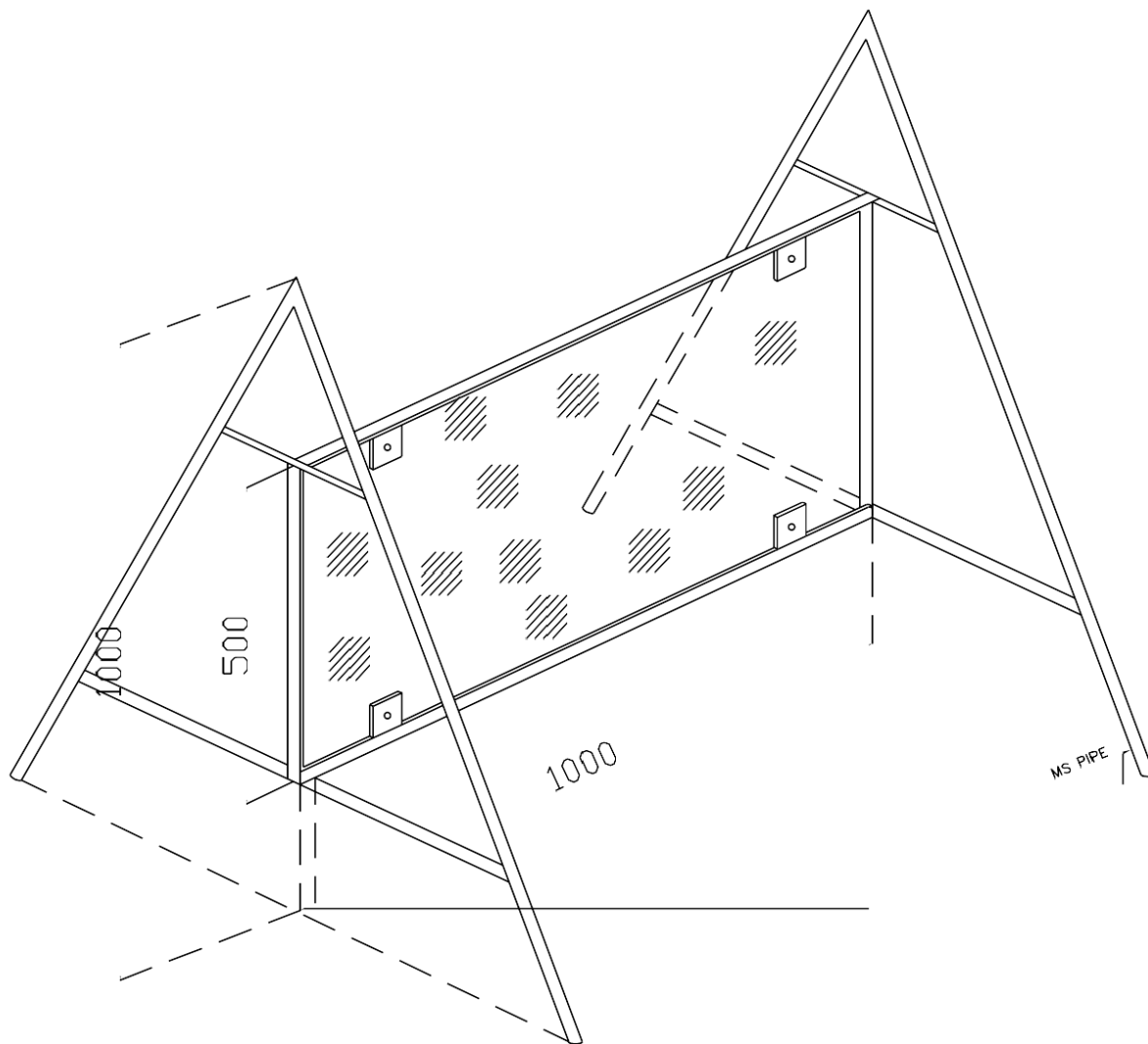
C

B

B

A

A



IN RED

IN BLACK

CAUTION

WORK IN PROGRESS

RELAYING OF HIGH PRESSURE PIPELINE

CLIENT : CLIENT'S NAME

CONTRACTOR : CONTRACTOR'S NAME

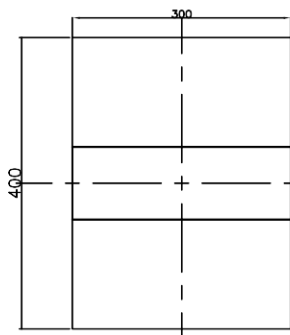
EMERGENCY PHONE NOS :

NOTES: -
1. ALL DIMENSIONS ARE IN mm

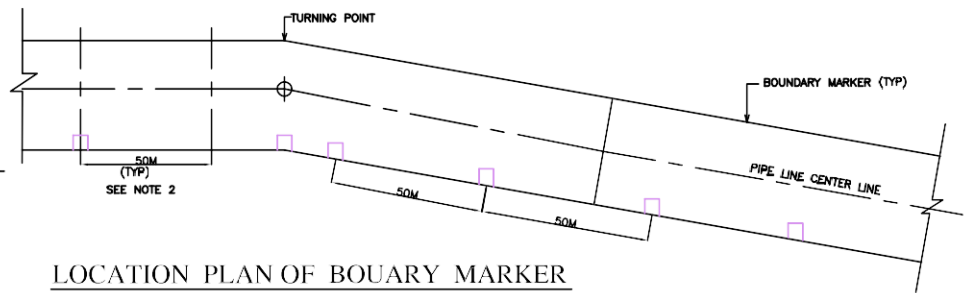
FOR TENDER PURPOSE ONLY

REV NO.	DATE	ZONE	DESCRIPTIONS	BY	APPRD		
REVISIONS						REVISIONS	DRG NO.
		NAME	SIG.	DATE	MAHARASTRA NATURAL GAS LTD.		
DSGN					CNG & CITY GAS DISTRIBUTION IN PUNE		
DRWN					CAUTION BOARD		
CHD. & VERIFIED					SCALE :- NTS		
APPROVED					DRG. NO. M N G L / PLANG STEEL/05		

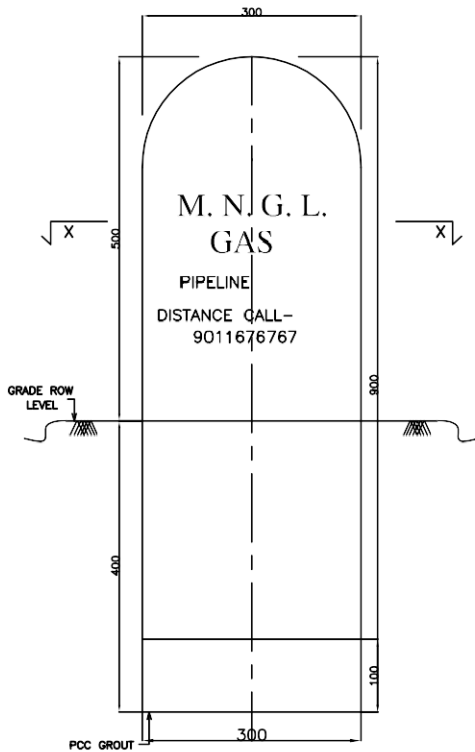
5 3 2 1



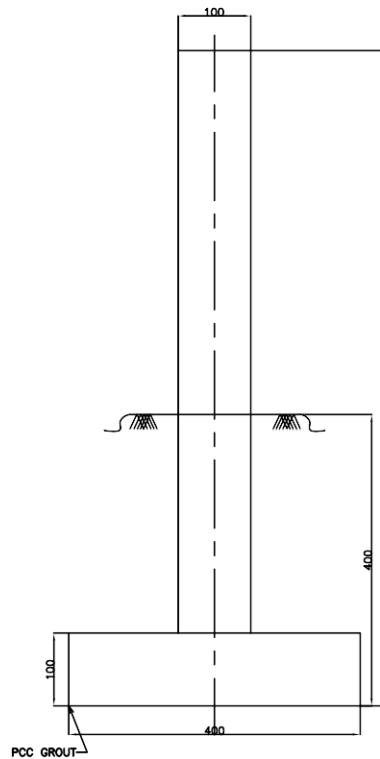
PLAN



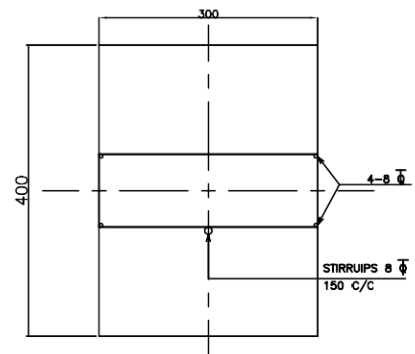
LOCATION PLAN OF BOUARY MARKER



ELEVATION



SIDE VIWE

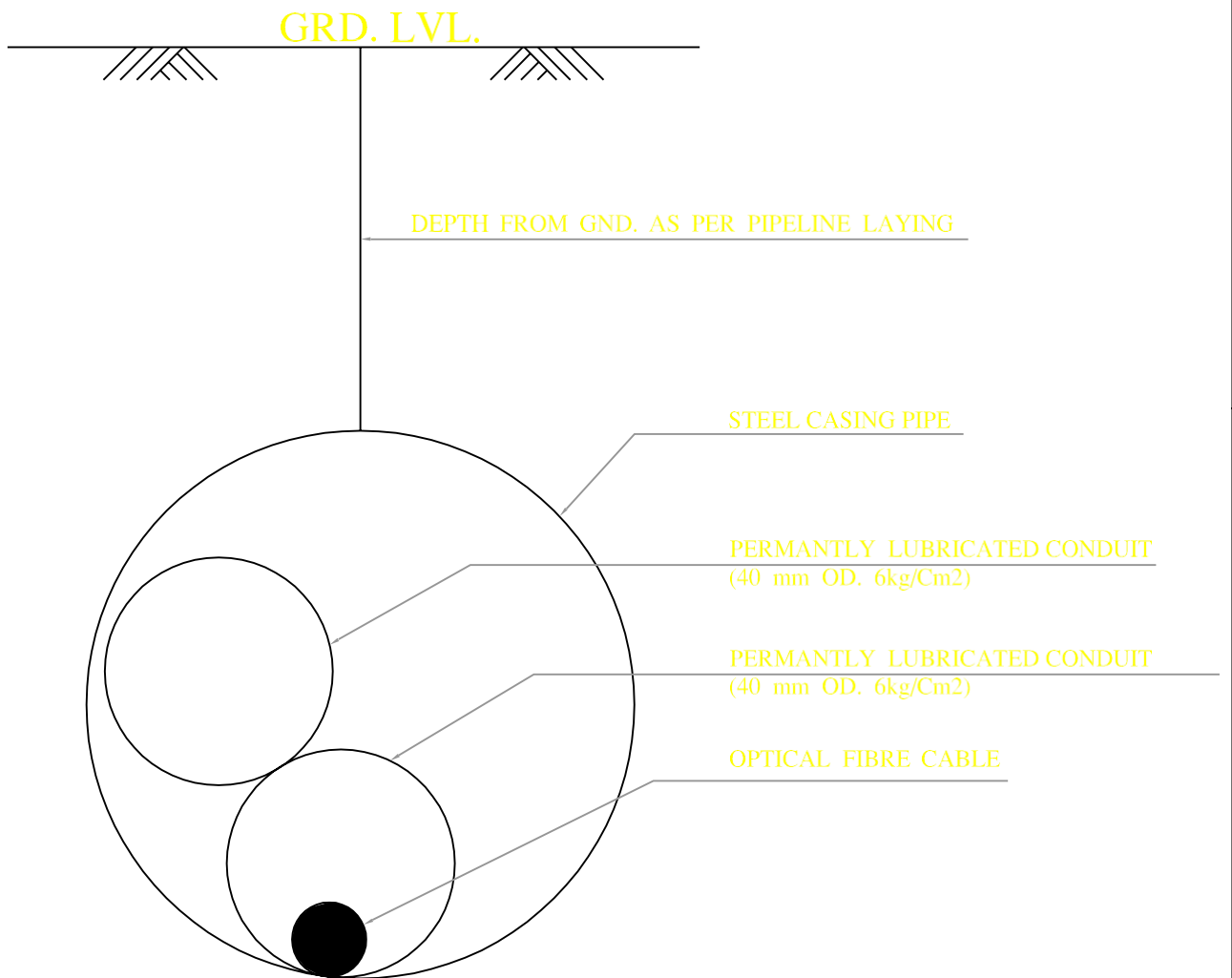


SECTION X-X

NOTES:-

1. ALL DIMENSIONS ARE MM UNLESS OTHARWISE SPECIFIED.
2. MARKERS SHALL BE INSTALLED IN EVERY 50M INTERVAL AS PER INSTRUCTION OF EIC
3. ALL BOUNDRY MARKERS SHALL BE PRECAST AND INSCRIPTIONS SHALL BE ENGAVED CENTRALLY IN THE MOLULD ON ONE FACE .
4. LETTERS SHALL BE 60 HIGH AND 5 DEEP.
5. INSCRIPTIONS SHALL THE PIPELINE.
6. CONCRETE FOR BOUNDARY MARKERS SHALL BE 20.
7. ABOVE GROUND PART OF BOUNDARY MARKERS BE PAINTED YELLOW WITH MINIMUM THREE COATS OF APPROVED QUALITY PAINT INSCRIPTIONS SHALL BE PAINTED BLACK.(35MICRONS COAT)

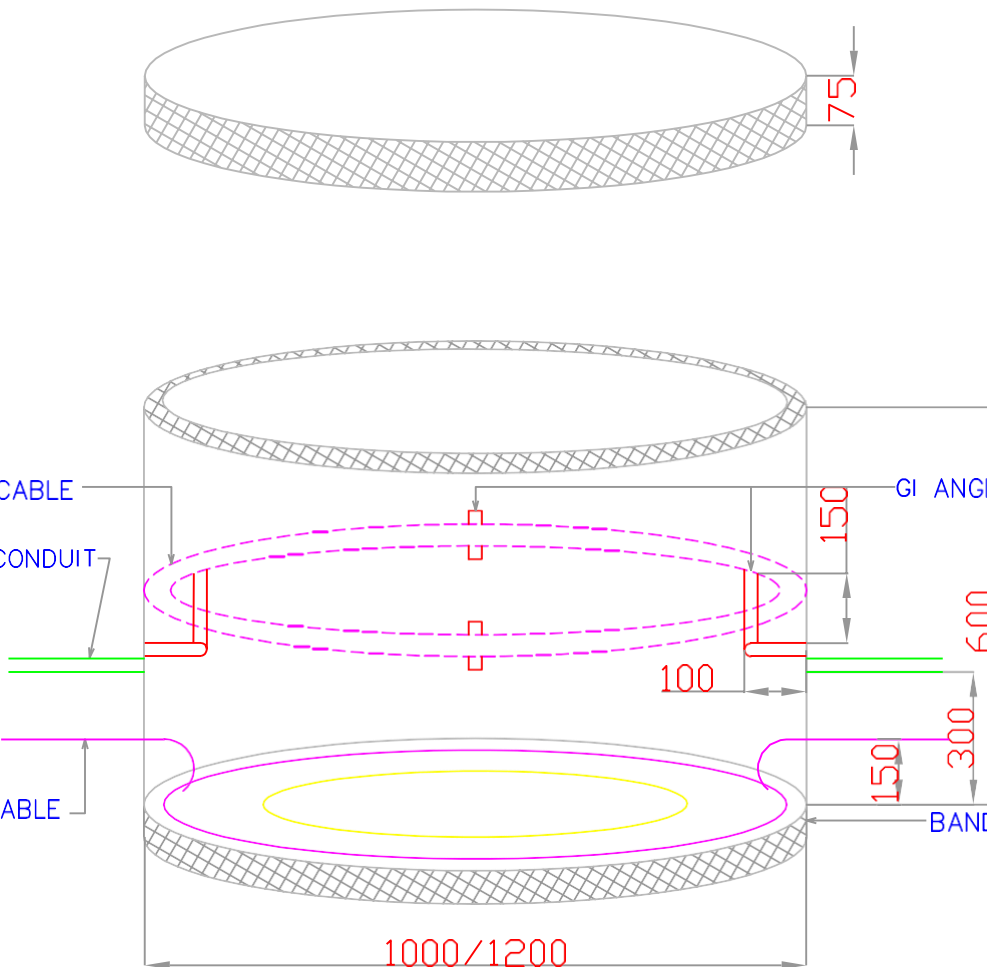
REV NO.	DATE	ZONE	DESCRIPTIONS	BY	APPRD	DRG. NO.
REVISIONS					REFRECNES	DRG. NO.
MAHARASTRA NACHURAL GAS LTD						
CNG & CITY GAS DISTRIBUTION IN PUNE						
ROUTE BOUNDARY MARKER					SCALE : N.T.S	
					DRG. NO. M N G L / PLAN / STEEL #06	

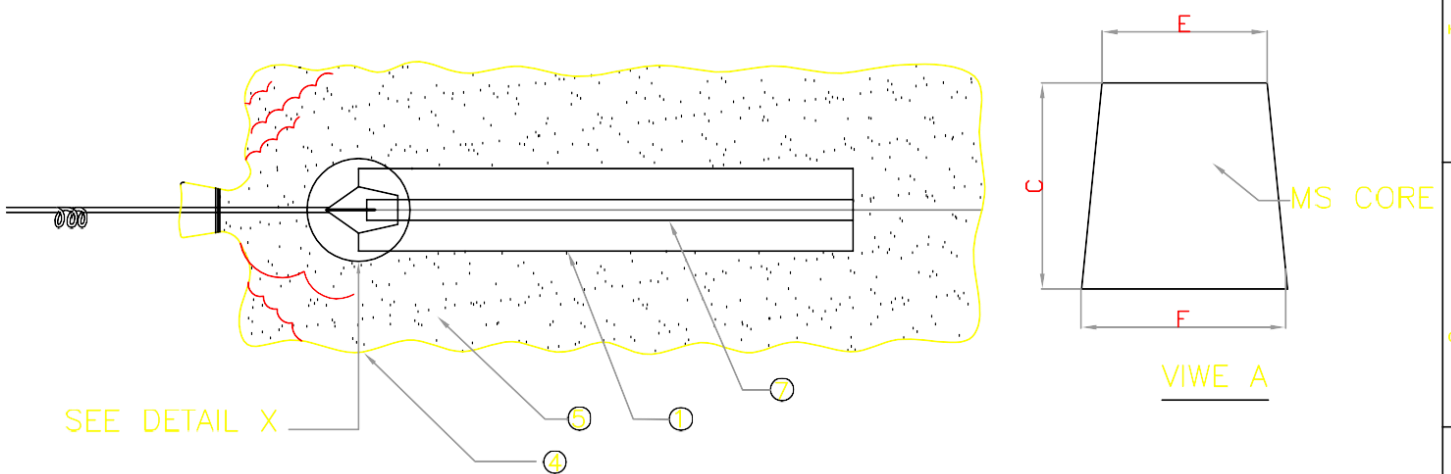


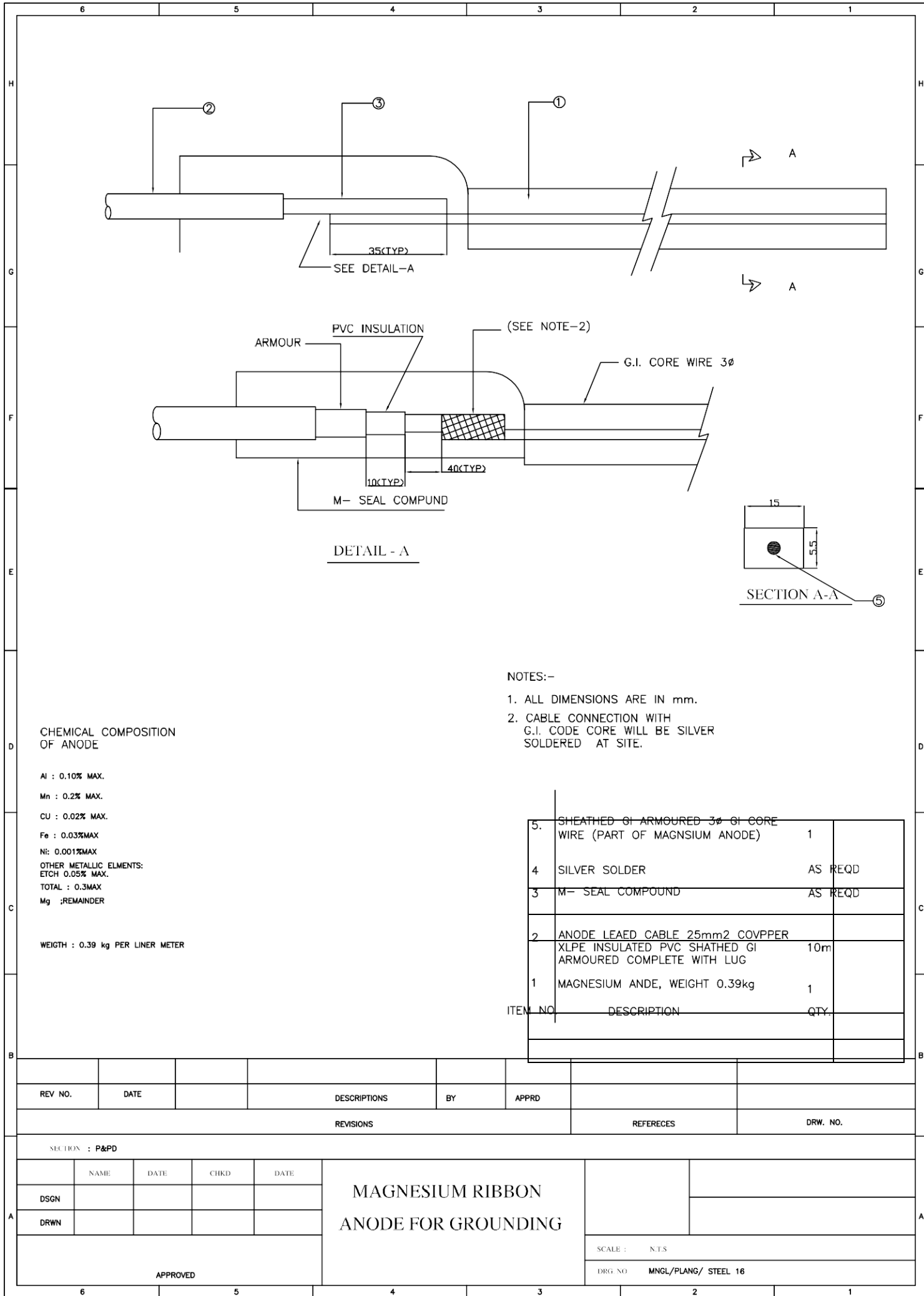
NOTE :-

1. OPTICAL FIBER SHALL BE LAID ON RIGHT SIDE OF THE PIPELINE IN THE DIRECTION OF GAS FLOW.
2. OFC SHALL BE LAID AS PER THE SPECIFICATION NO. MEC/S/05/E5/T/001 REV-0

REV NO.	DATE		DESCRIPTIONS	BY	APPRD		
REVISIONS						REFERECES	DRW. NO.
SECTION : P&PD							
	NAME	DATE	CHKD	DATE	OPRICAL FIBER CABLE LAYING (CASSED CROSSING) 2 Nos. HDPE DUCT		
DSGN							
DRWN							
CHKD& VERIFIED							
APPROVED							
6	5	4	3	2	1	SCALE : N.T.S	
						DRG. NO. MNGL/PLANG/ STEEL 11	

5	4	3	2	1																																																																																	
G					G																																																																																
F					F																																																																																
E					E																																																																																
D					D																																																																																
C	<p><u>NOTES:</u></p> <ol style="list-style-type: none">1. ALL DIMENSIONS ARE IN mm.2. GI ANGLE SUPPORT SHALL BE OF 30X3mm3. MINIMUM SPARE CABLE SHALL BE PROVIDED AND PROPERTY ROLLED IN JOINTING PIT AS PER SPECIFICATION4.HDPE CONDUIT END SHALL BE SEAL IN THE IN JOINTING PIT AFTIER TESTING				C																																																																																
B					B																																																																																
<table><tr><td></td><td></td><td></td><td></td><td></td><td></td><td></td><td></td></tr><tr><td>REV. NO.</td><td>DATE</td><td>DESCRIPTIONS</td><td>BY</td><td>CHKD</td><td>APPRD</td><td></td><td></td></tr><tr><td colspan="6">REVISIONS</td><td>REFERENCES</td><td>DRG. NO.</td></tr><tr><td colspan="8"></td></tr><tr><td colspan="2">SECTION</td><td colspan="3"></td><td colspan="2"></td><td></td></tr><tr><td></td><td>NAME</td><td>DATE</td><td colspan="2">SIG.</td><td colspan="2"></td><td></td></tr><tr><td>DESIGN</td><td></td><td></td><td colspan="2"></td><td colspan="2"></td><td></td></tr><tr><td>DRWN</td><td></td><td></td><td colspan="2"></td><td colspan="2"></td><td></td></tr><tr><td>CHKD.&VERIFIED</td><td></td><td></td><td colspan="2"></td><td colspan="2"></td><td></td></tr><tr><td>APPROVED</td><td></td><td></td><td colspan="2"></td><td colspan="2"></td><td></td></tr></table>													REV. NO.	DATE	DESCRIPTIONS	BY	CHKD	APPRD			REVISIONS						REFERENCES	DRG. NO.									SECTION									NAME	DATE	SIG.					DESIGN								DRWN								CHKD.&VERIFIED								APPROVED								A
REV. NO.	DATE	DESCRIPTIONS	BY	CHKD	APPRD																																																																																
REVISIONS						REFERENCES	DRG. NO.																																																																														
SECTION																																																																																					
	NAME	DATE	SIG.																																																																																		
DESIGN																																																																																					
DRWN																																																																																					
CHKD.&VERIFIED																																																																																					
APPROVED																																																																																					
5	4	3	2	1																																																																																	

6	5	4	3	2	1																															
H						H																														
G	<p>SEE DETAIL X</p>					G																														
F	<p>PER-PACKED ZINC ANODE</p>					F																														
E	<p>CHEMICAL COPOISTON OF ANODE (% WEIGHT)</p>					E																														
D	<table><thead><tr><th>CHEMICAL</th><th>TYPE- I</th><th>TYPE- II</th></tr></thead><tbody><tr><td>Al</td><td>: 0.1% – 0.5 %</td><td>0.005% MAX</td></tr><tr><td>Cd</td><td>: 0.25% –0.07%</td><td>0.003% MAX</td></tr><tr><td>Cu</td><td>: 0.005% MAX</td><td>0.002% MAX</td></tr><tr><td>Fe</td><td>: 0.005% MAX</td><td>0.0014% MAX</td></tr><tr><td>Pb</td><td>: 0.006% MAX</td><td>0.003% MAX</td></tr><tr><td>OTHERS</td><td>: 0.1% MAX</td><td>—</td></tr><tr><td>Zn</td><td>: REMAINDER</td><td>REMAIDER</td></tr></tbody></table>					CHEMICAL	TYPE- I	TYPE- II	Al	: 0.1% – 0.5 %	0.005% MAX	Cd	: 0.25% –0.07%	0.003% MAX	Cu	: 0.005% MAX	0.002% MAX	Fe	: 0.005% MAX	0.0014% MAX	Pb	: 0.006% MAX	0.003% MAX	OTHERS	: 0.1% MAX	—	Zn	: REMAINDER	REMAIDER	D						
CHEMICAL	TYPE- I	TYPE- II																																		
Al	: 0.1% – 0.5 %	0.005% MAX																																		
Cd	: 0.25% –0.07%	0.003% MAX																																		
Cu	: 0.005% MAX	0.002% MAX																																		
Fe	: 0.005% MAX	0.0014% MAX																																		
Pb	: 0.006% MAX	0.003% MAX																																		
OTHERS	: 0.1% MAX	—																																		
Zn	: REMAINDER	REMAIDER																																		
C	<p>NOTES:—</p> <ol style="list-style-type: none">1. ANODE COMPOSITION, NET WEIGHT GROSS WIGHTE DIMENSIONS SHALL BE FURNISHED BY CONTRACTOR2. ANODE TAIL CABLE SHALL BE HIGH CONDUCTIVITY, STRANDED, COPPER CONDUCTOR, 600/1100 V GRADE XLPE INSULATED, PVC SHATHED & UNARMoured.					C																														
B	<table><thead><tr><th>ITEM</th><th>DESCRIPTION</th><th>QTY.</th></tr></thead><tbody><tr><td>7</td><td>2.5 THICK X 15 WIDE GI CORE STRIP (PART OF ZINC ANODE)</td><td></td></tr><tr><td>6</td><td>SILVER SOLDER</td><td>AS REQD.</td></tr><tr><td>5</td><td>BACKFILL MATERIAL</td><td>AS REQD.</td></tr><tr><td>4</td><td>COTTON BAG</td><td>1</td></tr><tr><td>3</td><td>M— SEAL COMPOUND</td><td>AS REQD.</td></tr><tr><td>2</td><td>ANODE TAIL CABLE PE INSULATED, PVC SHATHED, UNARMoured 6 mm2 SINGLE CORE COPPER, 600/1100 V,</td><td>AS REQD.</td></tr><tr><td>1</td><td>ZINC ANODE, WEIGHT 17 ibs (7.7kg)</td><td>1</td></tr></tbody></table>					ITEM	DESCRIPTION	QTY.	7	2.5 THICK X 15 WIDE GI CORE STRIP (PART OF ZINC ANODE)		6	SILVER SOLDER	AS REQD.	5	BACKFILL MATERIAL	AS REQD.	4	COTTON BAG	1	3	M— SEAL COMPOUND	AS REQD.	2	ANODE TAIL CABLE PE INSULATED, PVC SHATHED, UNARMoured 6 mm2 SINGLE CORE COPPER, 600/1100 V,	AS REQD.	1	ZINC ANODE, WEIGHT 17 ibs (7.7kg)	1	B						
ITEM	DESCRIPTION	QTY.																																		
7	2.5 THICK X 15 WIDE GI CORE STRIP (PART OF ZINC ANODE)																																			
6	SILVER SOLDER	AS REQD.																																		
5	BACKFILL MATERIAL	AS REQD.																																		
4	COTTON BAG	1																																		
3	M— SEAL COMPOUND	AS REQD.																																		
2	ANODE TAIL CABLE PE INSULATED, PVC SHATHED, UNARMoured 6 mm2 SINGLE CORE COPPER, 600/1100 V,	AS REQD.																																		
1	ZINC ANODE, WEIGHT 17 ibs (7.7kg)	1																																		
A	<table><thead><tr><th>REV NO.</th><th>DATE</th><th>DESCRIPTIONS</th><th>BY</th><th>APPRD</th></tr></thead><tbody><tr><td colspan="5">REVISIONS</td></tr><tr><td colspan="5">REFERECES</td></tr><tr><td colspan="5">DRW. NO.</td></tr></tbody></table> <p>SECTION : P&PD</p> <table><thead><tr><th>DSGN</th><th>NAME</th><th>DATE</th><th>CHKD</th><th>DATE</th></tr></thead><tbody><tr><td>DRWN</td><td></td><td></td><td></td><td></td></tr></tbody></table> <p>APPROVED</p> <p>PREPACKAGED ZINC ANODE</p> <p>SCALE : N.T.S</p> <p>DRG NO : MNGL/PLANG/ STEEL 14</p>					REV NO.	DATE	DESCRIPTIONS	BY	APPRD	REVISIONS					REFERECES					DRW. NO.					DSGN	NAME	DATE	CHKD	DATE	DRWN					A
REV NO.	DATE	DESCRIPTIONS	BY	APPRD																																
REVISIONS																																				
REFERECES																																				
DRW. NO.																																				
DSGN	NAME	DATE	CHKD	DATE																																
DRWN																																				
6	5	4	3	2	1																															



CHEMICAL COMPOSITION
OF ANODE

Al : 0.10% MAX.

Mn : 0.2% MAX.

CU : 0.02% MAX.

Fe : 0.03%MAX

Ni: 0.001%MAX

OTHER METALLIC ELMENTS:

ETCH 0.05% MAX.

TOTAL : 0.3MAX

Mg ;REMAINDER

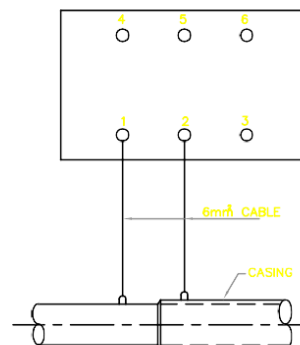
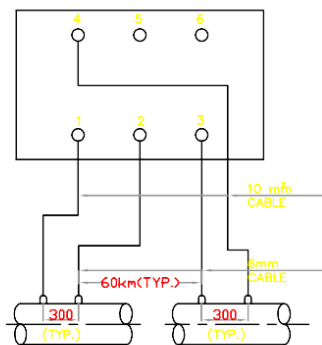
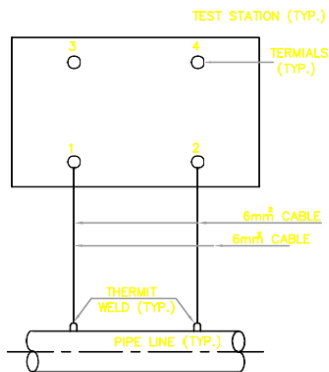
WEIGHT : 0.39 kg PER LINER METER

NOTES:-

1. ALL DIMENSIONS ARE IN mm.
2. CABLE CONNECTION WITH
G.I. CODE CORE WILL BE SILVER
SOLDERED AT SITE.

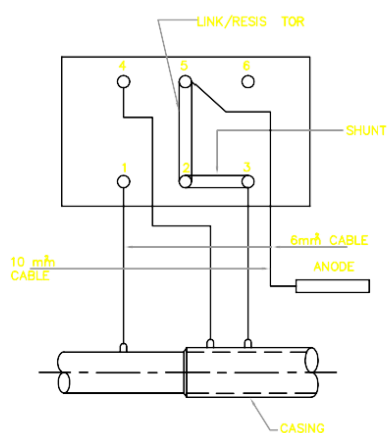
5.	SHEATHED GI ARMoured 3Ø GI CORE WIRE (PART OF MAGNSIUM ANODE)	1	
4	SILVER SOLDER	AS REQD	
3	M- SEAL COMPOUND	AS REQD	
2	ANODE LEAD CABLE 25mm2 COVPPER XLPE INSULATED PVC SHATHED GI ARMoured COMPLETE WITH LUG	10m	
1	MAGNESIUM ANDE, WEIGHT 0.39kg	1	
ITEM NO	DESCRIPTION	QTY.	

REV NO.	DATE	DESCRIPTIONS	BY	APPRD	REVERECES	DRW. NO.
SECTIONS : P&PD						
DSGN	NAME	DATE	CHKD	DATE	MAGNESIUM RIBBON ANODE FOR GROUNDING	
DRWN						
APPROVED					SCALE : N.T.S	
					DRG NO	MNGL/PLANG/ STEEL 16

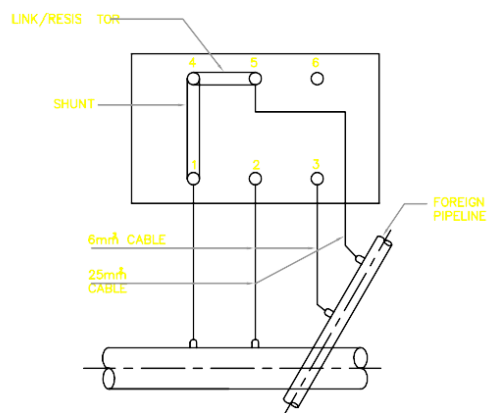


POTENTIAL MEASUREMENT CURRENT MEASUREMENT
(CONNECTION SCHEME-A) (CONNECTION SCHEME-B)

CASED CROSSING WITH
UNCOATED CASING
(CONNECTION SCHEME-C)

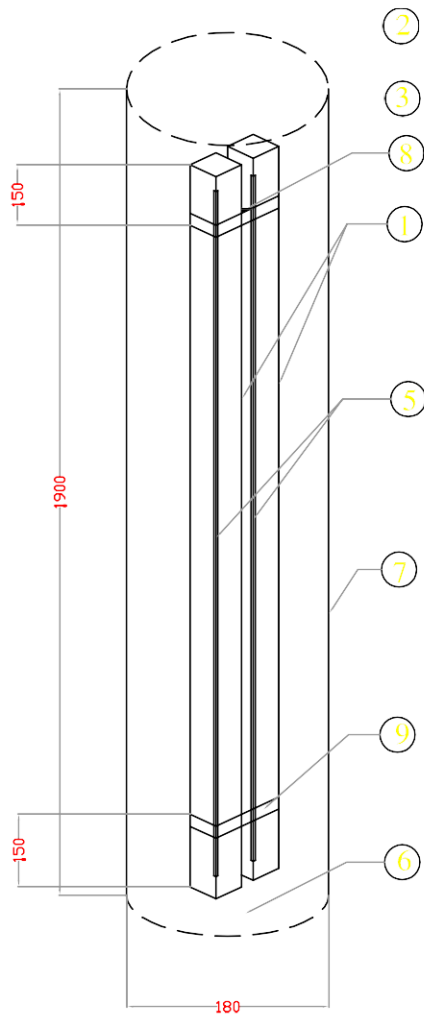


CASED CROSSING WITH
COATED CASING
(CONNECTION SCHEME - D)

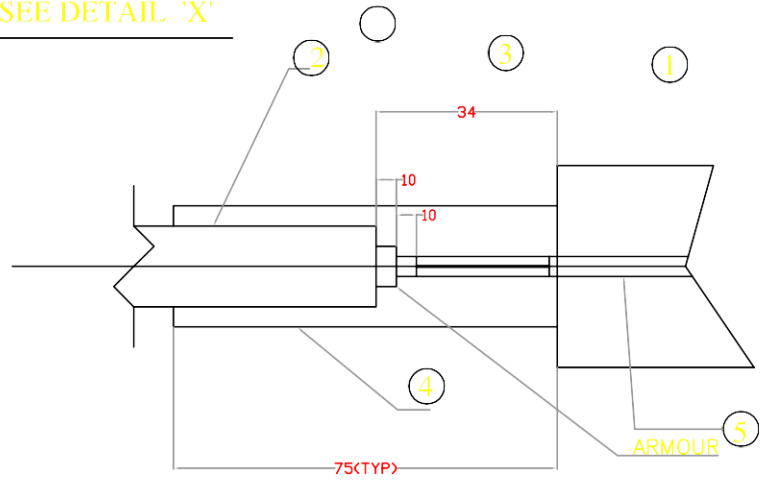


FOREING PIPELINE CROSSING
(CONNECTION SCHEME -E)

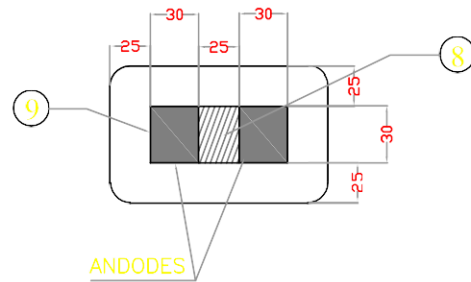
REV. NO.	DATE		DESCRIPTIONS	BY	APPRD		
REVISIONS						REFERECES	DRW. NO.
SECTION : P&PD							
	NAME	DATE	CHKD	DATE	TEST STATION CONNECTION SCHEMES		
DSGN							
DRWN							
APPROVED					SCALE : N.T.S		
					DRG. NO. MNGI/PLANG/ STEEL 19		



SEE DETAIL 'X'



DETAIL 'X'



NOTES :-

1. ALL DIMENSIONS ARE IN mm.
2. ZINC GROUNDING CELLS SHALL BE INSTALLED VERTICALLY SUCH THAT THE TOP OF THE CELL IS APPROX AT THE SAME ELEV. AS PIPE BOTTOM.
3. ALL CABLE LEADS FOR ZINC GROUNDING CELL SHALL BE AS SHORT AND DIRECT AS POSSIBLE.
4. GROUNDING CELL CABLE ARMOUR SHALL NOT HAVE ELECT. CONNECTION TO ANODE

ZINC ANODE COMPOSITION (% WEIGHT)

ALUMINIUM	0.005% MAX
MAGNESIUM	0.003% MAX
COPPER	0.002% MAX
IRON	0.0014% MAX
LEAD	0.003% MAX
OTHERS	—
ZINC	REMAINDER

ZINC ALLOY CONFORMING TO ASTM-B-418-G7

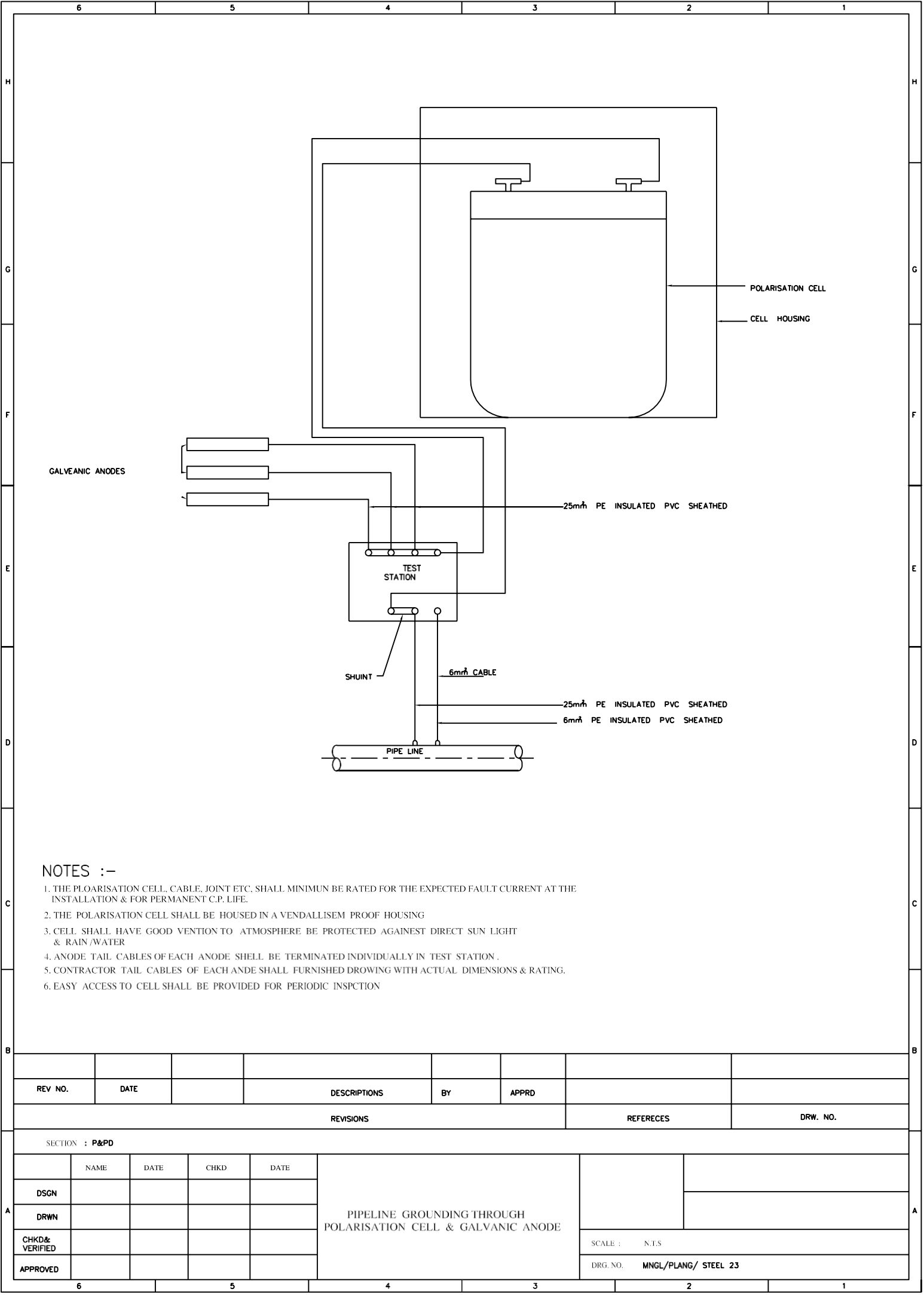
BACKFILL COMPOSITION

GYPSUM	75%
BENTONITE	20%
SODIUM SULPHATE	5%

1 IAP= SIRAP AS REQD.

1	BRACKET INSULATING SPACER 25X36X50	2 NOS.		
1	COTTON BAG 180#	1NO.		
1	BACK FILL MAT.	AS REQD.		
1	6mm GALVANISED STEEL CORE	AS REQD.		
1	HEAT SHINK SLEEVE	2 NOS.		
1	SILVER BRAZED CONNECTION	2 NOS.		
1	ANODE WIL CABLE 25mm Sq 10 Cu XLPE/PVC SHI A1H IS ARMOURED600/1000 V.	30 mL		
1	ZINC ANODE 36X36X1525	2NOS.		
ITEM NO.	DESCRIPTION	QTY.		
BILL OF MATERIALS				

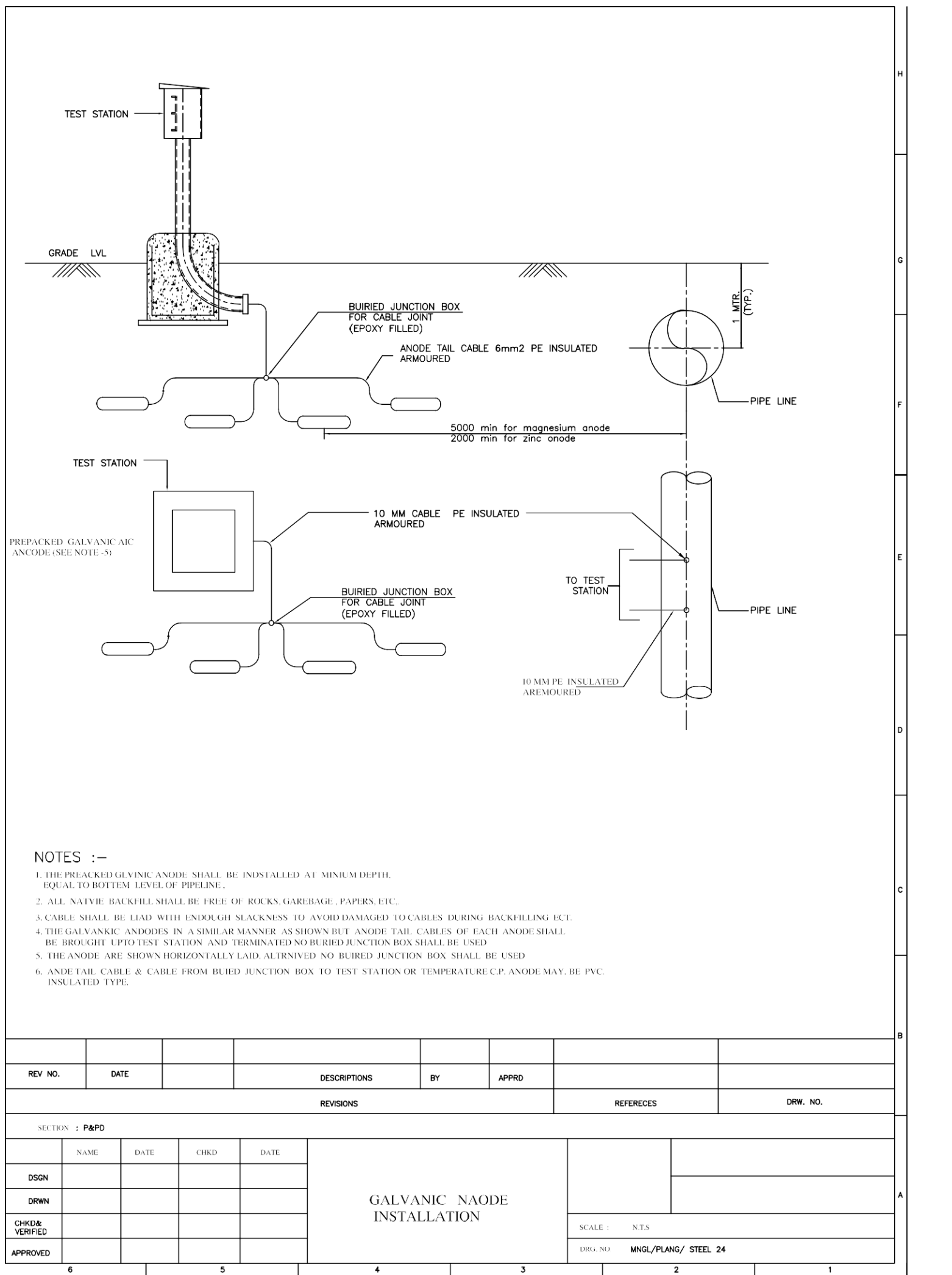
REV NO.		DATE	ZONE	DESCRIPTIONS	BY	APPRD	REFRECES	DRW. NO.
REVISIONS								
SECTION : P&PD								
DSGN	NAME	DATE	CHKD	DATE	DETAILS OF ZINC GROUNDING CELL			
DRWN								
APPROVED					SCALE : N.T.S. DRG NO. MNG/PLANG/ STEEL/21			



NOTES :-

- 1. THE PLOARISATION CELL, CABLE, JOINT ETC, SHALL MINIMUM BE RATED FOR THE EXPECTED FAULT CURRENT AT THE INSTALLATION & FOR PERMANENT C.P. LIFE.
- 2. THE POLARISATION CELL SHALL BE HOUSED IN A VENDALLISEM PROOF HOUSING
- 3. CELL SHALL HAVE GOOD VENTION TO ATMOSPHERE BE PROTECTED AGAINST DIRECT SUN LIGHT & RAIN/WATER
- 4. ANODE TAIL CABLES OF EACH ANODE SHELL BE TERMINATED INDIVIDUALLY IN TEST STATION .
- 5. CONTRACTOR TAIL CABLES OF EACH ANDE SHALL FURNISHED DROWING WITH ACTUAL DIMENSIONS & RATING.
- 6. EASY ACCESS TO CELL SHALL BE PROVIDED FOR PERIODIC INSPCTION

REV NO.	DATE		DESCRIPTIONS	BY	APPRD		
REVISIONS						REFERECES	DRW. NO.
SECTION : P&PD							
	NAME	DATE	CHKD	DATE	PIPELINE GROUNDING THROUGH POLARISATION CELL & GALVANIC ANODE		
DSGN							
DRWN							
CHKD& VERIFIED						SCALE :	N.T.S
APPROVED						DRG. NO.	MNGL/PLANG/ STEEL 23

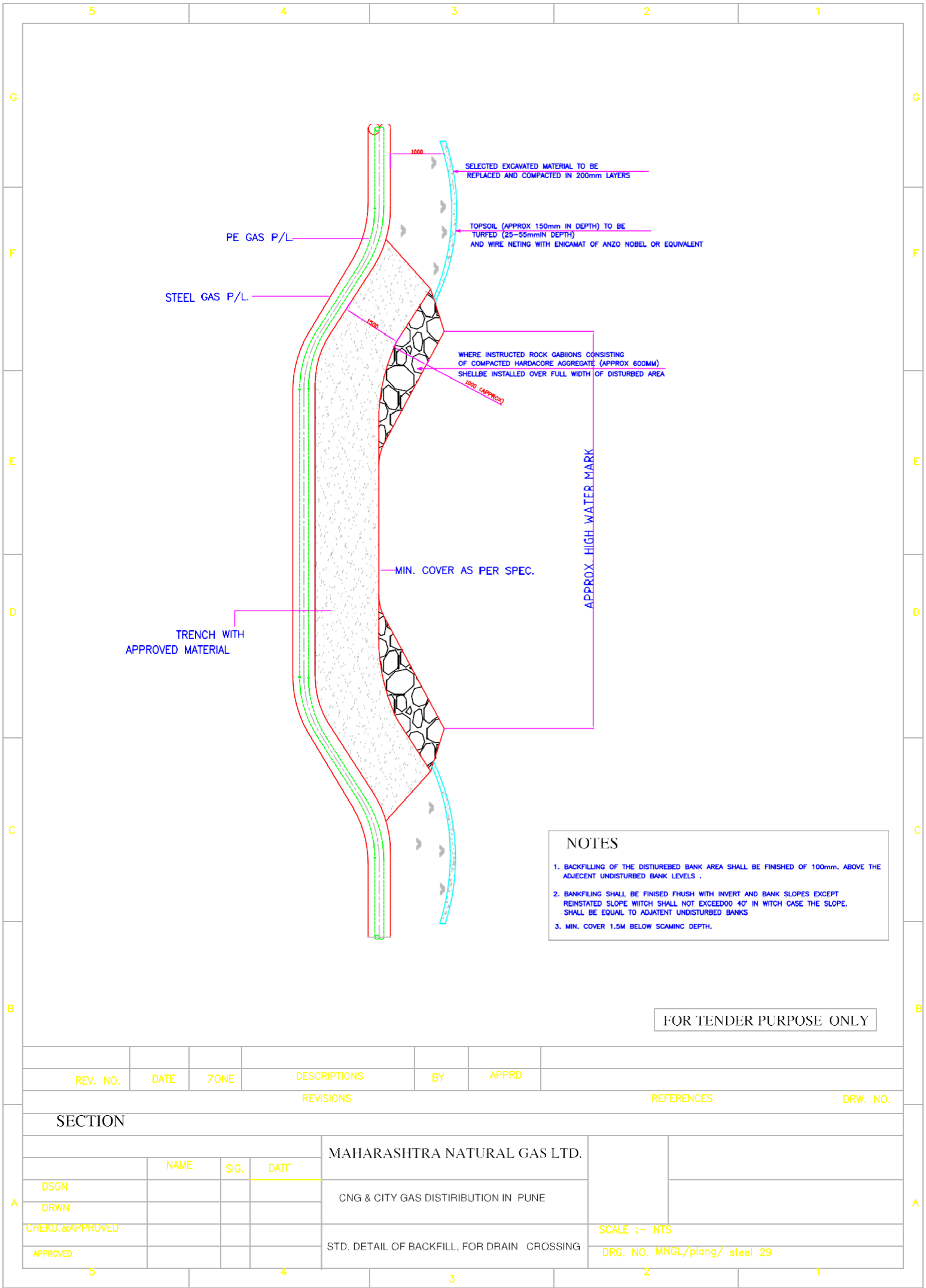


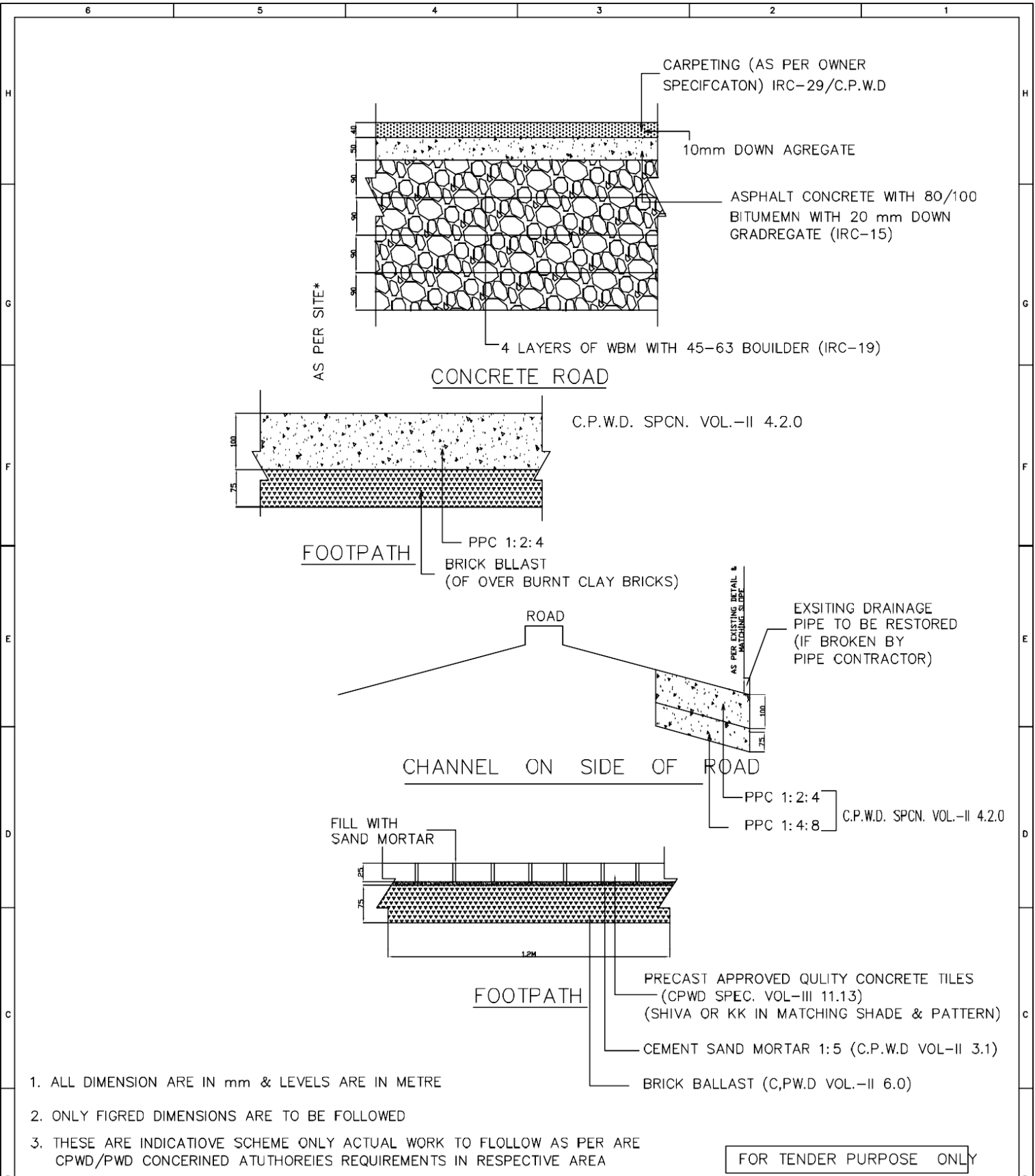
NOTES :-

1. THE PREPACKED GALVANIC ANODE SHALL BE INSTALLED AT MINIMUM DEPTH, EQUAL TO BOTTOM LEVEL OF PIPELINE.
2. ALL NATIVE BACKFILL SHALL BE FREE OF ROCKS, GARBAGE, PAPERS, ETC.
3. CABLE SHALL BE LAID WITH ENOUGH SLACKNESS TO AVOID DAMAGED TO CABLES DURING BACKFILLING ETC.
4. THE GALVANIC ANODES IN A SIMILAR MANNER AS SHOWN BUT ANODE TAIL CABLES OF EACH ANODE SHALL BE BROUGHT UP TO TEST STATION AND TERMINATED NO BURIED JUNCTION BOX SHALL BE USED
5. THE ANODE ARE SHOWN HORIZONTALLY LAID, ALTRNIVE NO BURIED JUNCTION BOX SHALL BE USED
6. ANODE TAIL CABLE & CABLE FROM BURIED JUNCTION BOX TO TEST STATION OR TEMPERATURE C.P. ANODE MAY, BE PVC INSULATED TYPE.

REV NO.	DATE		DESCRIPTIONS	BY	APPRD			
REVISIONS						REFERECES	DRW. NO.	
SECTION : P&PD								
	NAME	DATE	CHKD	DATE	GALVANIC NAODE INSTALLATION			
DSGN								
DRWN								
CHKD& VERIFIED						SCALE : N.T.S		
APPROVED						DRG. NO MNGL/PLANG/ STEEL 24		
6		5		4		3		2
								1

6	5	4	3	2	1																																																																																																
<div>NOTES</div> <div><div>1. TEST STATION SHALL HAVE WEATHRPROOF ENCLOSURE HAVING DEGREE OF PROTECTION IP-55,DEFINED IN AS DEFINED IP AS DEFINED INIEC-529(1989)/IS:2147 (1962) THE SHUTTER AND THE BOX HINGED TYPE WITH CONCEALED LOCK AND SHALL HAVE DOOR GASKET</div><div>2. THE HINGES SHALL BE WELDED TO THE SHUTTER AND THE BOX SUITABLY.</div><div>3. THE MS ANGLES SHALL BE WELDED TO THE SIDES THE ANGLES SHALL HAVE TAPPED HOLES FOR FIXIG TERMINAL PLATE.</div><div>4. THE INNER SURFACE OF THE TEST STATION SHALL BE PAPPED WITH LAED OXIDE TAPPED FOR FIXING PRIMER GRADE.</div><div>5. THE OUTSIDE OF TEST STATION SHALL BE PANTED WITH TWO COATS OF ZINC RED EPOXY PRIMER AND THREE COATS OF GREY COLOURED EXPOXY PAINT COMPLETE WITH CABLE PIPE & FDN PLATE.</div><div>6. THE NAME PLATE SHALL BE OF ANDODISED OF ALUMINIUM WITH BLACK BACKGROUND AND WHITE LETTERS (SIZE 3mm) THE NAME PLATE SHALL BE FIXED TO INNER SIDE OF SHUER BY ARALDITE OR EQUIVALENT</div><div>7. THE NAME PLATE OF EACH TEST STATION SHALL CARRY THE FOLLOWING INFORMATION.<div><div>A) TEST STACTION CONNECTION SCHEME TYPE</div><div>B) RELEVANT TEST STATION CONNECTION SCHEME DIAGRAM</div><div>C) TEST STATION NO.</div><div>D) CHAINAGE IN KM</div><div>E) DISTANCE FROM PIPE IN m</div><div>F) DISTANCE OF GAS FLOW</div></div></div><div>8. WHEN ERECTED THE TEST STAION SHALL BE IN UIPRIGHT POSITION.</div><div>9. TEST STATION SHALL BE SO ERECTED AS TO SERVE ALSO AS PIPELINE MARKER. AND ANODE GRAUNDBED MARKER .THEIR SHUTTER SHALL BE TO THE LINE OF AXIS OF</div><div>10. THE NUMBER OF ALL TEST STATION SHALL BE WRITTEN WITH BLACK PAINT USING 40mm STENCIL BLOCK ON THE OUTER SIDE OF THE SHUTTER IN A UNIFORM MANNER AN ARROW SHOWING DIRECTION OF OF FLOW OF GAS SHALL BE MARKED TO UNDERLINE THE TEST STECHTION NUMBER ON SHUTTER</div><div>11. HEIGHT OF THE STATION ABOVE GROUND LEVEL SHOWN IN THE DRAWING IS TYPICAL.</div><div>12. ALL CABLES COMMING TO TEST STATION SHALL BE LABELLED ON BOTH ENDS WHITH INDENTIFICATION NUMBERS</div><div>13. TOTAL NUMMBER OF TEST STATIONS AND THEIR TYPE ARE MENNTIONED IN CONSOLIDATED B.O.M.</div><div>14. TEST BETWEEN BRASS TERMINALS AND BODY AT 2KV FOR ONE MINUTE</div><div>15. ALL DIMENSION ARE APPROXIMATE AND CAN VARY SLIGHTLY.</div><div>17. THE ENTRY SHALL BE SEALED WITH BITUIMEN COMPOUND AFTER CABLE LAYING TO PREVENT WATER ENTRY.</div><div>16. ALL DIMENSION ARE IN MM.</div></div>																																																																																																					
<table><tr><td>30</td><td>VARIABLE RESISTANCE 0-0.1 OHM.</td><td>01</td></tr><tr><td>29</td><td>100 MM ØM.S. SCH.40 90° ELBLOW R=50</td><td>01</td></tr><tr><td>28</td><td>BILDING WIRE MS,</td><td>AS REQD.</td></tr><tr><td>27</td><td>PCC MIX 1:5:10</td><td>0.064m3</td></tr><tr><td>26</td><td>PCC MIX M20</td><td>0.324m3</td></tr><tr><td>25</td><td>ROD, 8Ø MS</td><td>28m</td></tr><tr><td>24</td><td>STIFFENER PLATE 8 THK</td><td>04</td></tr><tr><td>23</td><td>FONDATION BLOT M12</td><td>04</td></tr><tr><td>22</td><td>RUBBER BUSH MATCHING WITH PIPE</td><td>01</td></tr><tr><td>21</td><td>FOUNDATION PLATE 6THKX400X400MS PLATE</td><td>02</td></tr><tr><td>20</td><td>NEOPRENE RUBBER GASKET 6THK.</td><td>01SET</td></tr><tr><td>19</td><td>MS PIPE 100Ø IS: 1239 P,T (1990)- HAVY GRADYE</td><td>01</td></tr><tr><td>18</td><td>COUPLING PLATE 5THKX180X130 MS PLATE , 100ØHOLE AT CENTRE</td><td>01</td></tr><tr><td>17</td><td>LATCH FOR SHUTTER</td><td>01</td></tr><tr><td>16</td><td>BRASS SCREW M6XM16</td><td>04</td></tr><tr><td>15</td><td>ANGLE 5THK,X 50 X 50 X30</td><td>04</td></tr><tr><td>14</td><td>SHUNT , 0.1 OHM, 0.5 A, 50 mV</td><td>01</td></tr><tr><td>13</td><td>COPPER LINK 2.5 THK .X 12 X LENGTH AS REQD.</td><td>01</td></tr><tr><td>12</td><td>BRASS WASHER</td><td>AS REQD</td></tr><tr><td>11</td><td>BRASS NUT,M6</td><td>AS REQD</td></tr><tr><td>10</td><td>BRASS STUD, M6 X 50</td><td>AS REQD</td></tr><tr><td>9</td><td>TEMINAL PLATE,6THKX160X200PHLINOLICLAM SHT</td><td>01</td></tr><tr><td>8</td><td>HINGE FOR SHUTTER</td><td>02</td></tr><tr><td>7</td><td>CASTLE LOCK WITH ONE KEY PER TEST STATION</td><td>01</td></tr><tr><td>6</td><td>NAME PLATE 0.9THKX 120 X 160 X ANODISED ALUMINUM</td><td>01</td></tr><tr><td>5</td><td>SHUTTER 3mm THK MS SHT</td><td>01</td></tr><tr><td>4</td><td>TOP 475X350X3mm THK MS SHT</td><td>01</td></tr><tr><td>3</td><td>SIDE PLATE 300X420X300X3mm THK MS SHT</td><td>01</td></tr><tr><td>2</td><td>REAR PLATE 425X420X3mm THK. MS SHT</td><td>01</td></tr><tr><td>1</td><td>BOTTOM PLATE 250X175X3mmTHK, MS 100Ø HOLE AT CENTER</td><td>01</td></tr><tr><td>ITEM</td><td>DESCRIPTION</td><td>QTY</td></tr><tr><td colspan="3">BILL OF MATERIALS</td></tr></table>						30	VARIABLE RESISTANCE 0-0.1 OHM.	01	29	100 MM ØM.S. SCH.40 90° ELBLOW R=50	01	28	BILDING WIRE MS,	AS REQD.	27	PCC MIX 1:5:10	0.064m3	26	PCC MIX M20	0.324m3	25	ROD, 8Ø MS	28m	24	STIFFENER PLATE 8 THK	04	23	FONDATION BLOT M12	04	22	RUBBER BUSH MATCHING WITH PIPE	01	21	FOUNDATION PLATE 6THKX400X400MS PLATE	02	20	NEOPRENE RUBBER GASKET 6THK.	01SET	19	MS PIPE 100Ø IS: 1239 P,T (1990)- HAVY GRADYE	01	18	COUPLING PLATE 5THKX180X130 MS PLATE , 100ØHOLE AT CENTRE	01	17	LATCH FOR SHUTTER	01	16	BRASS SCREW M6XM16	04	15	ANGLE 5THK,X 50 X 50 X30	04	14	SHUNT , 0.1 OHM, 0.5 A, 50 mV	01	13	COPPER LINK 2.5 THK .X 12 X LENGTH AS REQD.	01	12	BRASS WASHER	AS REQD	11	BRASS NUT,M6	AS REQD	10	BRASS STUD, M6 X 50	AS REQD	9	TEMINAL PLATE,6THKX160X200PHLINOLICLAM SHT	01	8	HINGE FOR SHUTTER	02	7	CASTLE LOCK WITH ONE KEY PER TEST STATION	01	6	NAME PLATE 0.9THKX 120 X 160 X ANODISED ALUMINUM	01	5	SHUTTER 3mm THK MS SHT	01	4	TOP 475X350X3mm THK MS SHT	01	3	SIDE PLATE 300X420X300X3mm THK MS SHT	01	2	REAR PLATE 425X420X3mm THK. MS SHT	01	1	BOTTOM PLATE 250X175X3mmTHK, MS 100Ø HOLE AT CENTER	01	ITEM	DESCRIPTION	QTY	BILL OF MATERIALS		
30	VARIABLE RESISTANCE 0-0.1 OHM.	01																																																																																																			
29	100 MM ØM.S. SCH.40 90° ELBLOW R=50	01																																																																																																			
28	BILDING WIRE MS,	AS REQD.																																																																																																			
27	PCC MIX 1:5:10	0.064m3																																																																																																			
26	PCC MIX M20	0.324m3																																																																																																			
25	ROD, 8Ø MS	28m																																																																																																			
24	STIFFENER PLATE 8 THK	04																																																																																																			
23	FONDATION BLOT M12	04																																																																																																			
22	RUBBER BUSH MATCHING WITH PIPE	01																																																																																																			
21	FOUNDATION PLATE 6THKX400X400MS PLATE	02																																																																																																			
20	NEOPRENE RUBBER GASKET 6THK.	01SET																																																																																																			
19	MS PIPE 100Ø IS: 1239 P,T (1990)- HAVY GRADYE	01																																																																																																			
18	COUPLING PLATE 5THKX180X130 MS PLATE , 100ØHOLE AT CENTRE	01																																																																																																			
17	LATCH FOR SHUTTER	01																																																																																																			
16	BRASS SCREW M6XM16	04																																																																																																			
15	ANGLE 5THK,X 50 X 50 X30	04																																																																																																			
14	SHUNT , 0.1 OHM, 0.5 A, 50 mV	01																																																																																																			
13	COPPER LINK 2.5 THK .X 12 X LENGTH AS REQD.	01																																																																																																			
12	BRASS WASHER	AS REQD																																																																																																			
11	BRASS NUT,M6	AS REQD																																																																																																			
10	BRASS STUD, M6 X 50	AS REQD																																																																																																			
9	TEMINAL PLATE,6THKX160X200PHLINOLICLAM SHT	01																																																																																																			
8	HINGE FOR SHUTTER	02																																																																																																			
7	CASTLE LOCK WITH ONE KEY PER TEST STATION	01																																																																																																			
6	NAME PLATE 0.9THKX 120 X 160 X ANODISED ALUMINUM	01																																																																																																			
5	SHUTTER 3mm THK MS SHT	01																																																																																																			
4	TOP 475X350X3mm THK MS SHT	01																																																																																																			
3	SIDE PLATE 300X420X300X3mm THK MS SHT	01																																																																																																			
2	REAR PLATE 425X420X3mm THK. MS SHT	01																																																																																																			
1	BOTTOM PLATE 250X175X3mmTHK, MS 100Ø HOLE AT CENTER	01																																																																																																			
ITEM	DESCRIPTION	QTY																																																																																																			
BILL OF MATERIALS																																																																																																					
<table><tr><td></td><td></td><td></td><td></td><td></td><td></td><td></td><td></td></tr><tr><td>REV NO.</td><td>DATE</td><td>ZONE</td><td>DESCRIPTONS</td><td>BY</td><td>APPRD</td><td></td><td></td></tr><tr><td colspan="6">REVISIONS</td><td>REFERECES</td><td>DRW. NO.</td></tr><tr><td colspan="8">SECTION : P&PD</td></tr><tr><td></td><td>NAME</td><td>DATE</td><td>CHKD</td><td>DATE</td><td colspan="3" rowspan="3">DETAILS OF TEST STATION POLARISATION CELL</td><td></td></tr><tr><td>DSGN</td><td></td><td></td><td></td><td></td><td></td></tr><tr><td>DRWN</td><td></td><td></td><td></td><td></td><td></td></tr><tr><td colspan="5">APPROVED</td><td colspan="3">SCALE : N.T.S</td><td></td></tr><tr><td colspan="5"></td><td colspan="3">DRG NO</td><td>MNGL/PLANG/ STEEL/ 27</td></tr></table>														REV NO.	DATE	ZONE	DESCRIPTONS	BY	APPRD			REVISIONS						REFERECES	DRW. NO.	SECTION : P&PD									NAME	DATE	CHKD	DATE	DETAILS OF TEST STATION POLARISATION CELL				DSGN						DRWN						APPROVED					SCALE : N.T.S									DRG NO			MNGL/PLANG/ STEEL/ 27																									
REV NO.	DATE	ZONE	DESCRIPTONS	BY	APPRD																																																																																																
REVISIONS						REFERECES	DRW. NO.																																																																																														
SECTION : P&PD																																																																																																					
	NAME	DATE	CHKD	DATE	DETAILS OF TEST STATION POLARISATION CELL																																																																																																
DSGN																																																																																																					
DRWN																																																																																																					
APPROVED					SCALE : N.T.S																																																																																																
					DRG NO			MNGL/PLANG/ STEEL/ 27																																																																																													
6	5	4	3	2	1																																																																																																





1. ALL DIMENSION ARE IN mm & LEVELS ARE IN METRE
2. ONLY FIGRED DIMENSIONS ARE TO BE FOLLOWED
3. THESE ARE INDICATIOVE SCHEME ONLY ACTUAL WORK TO FLOW AS PER ARE CPWD/PWD CONCERNED ATUTHOREIES REQUIREMENTS IN RESPECTIVE AREA

FOR TENDER PURPOSE ONLY

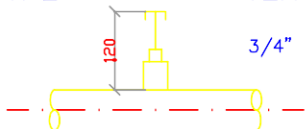
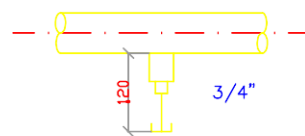
SECTION : P&PD

	NAME	SIG.	CHKD	MAHARAstra NATURAL GAS LTD	
DSGN				CNG & CITY GAS DISTRIBUTION PUNE	
DRWN				RESTORATION OF ROADS FOOTPATH CHANNEL	
CHKD & VERNIFIED					SCALE : 1:30
APPROVED					DRG NO. MNGL/PLANG/ STEEL/30

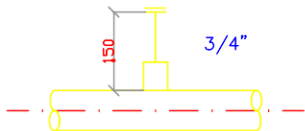
TYPE

VENT

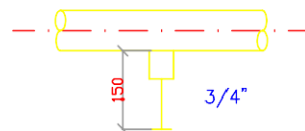
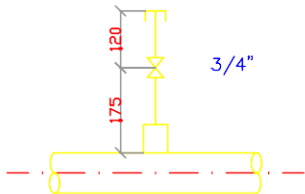
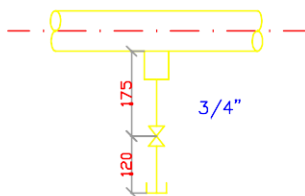
DRAIN

V1
V1PD1
D1P

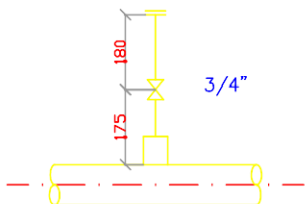
V2



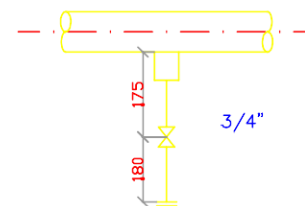
D2

V3
V3PD3
D3P

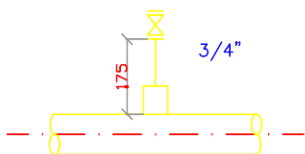
V4



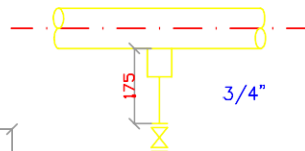
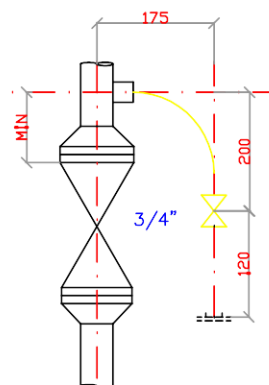
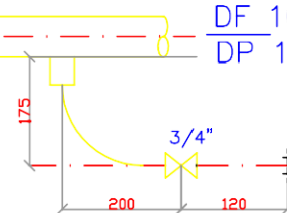
D4



V5



D5

DC 9
DF 9
DP 9DC 10
DF 10
DP 10

NOTES

1. DIMENSIONS ARE VALID FOR 75mm (MAX) THICKNESS INSULATION FOR HIGHER INSULATION THICKNESS INCREASE DIMENSION AS REQUIRED.
2. VENTS & DRAINS SHALL BE PROVIDED WITH GATE GLOBE OR PLUG VALVE WITH HALF COUPLING OR STUB IN WITH CAP OR FLANGE BLIND FLANGE AS PER PIPEING SPECIFICATIONS
3. VENTS/DRAINS CAN BE PROVIDED ON FLAT SIDE OF ECCENTRIC REDUCERS ON SIZES 4" & ABOVE
4. LEGND V=VENT, D=DRAIN, C=CAP, F=FLANGE, P=PLUG
5. PLUGGED END OF VELLE OR FITTING AHALL BE THREADED

REV NO.		DATE		ZONE		DESCRIPTIONS		BY		APPRD			
REVISIONS										REFERECES		DRW. NO.	
SECTION : P&PD													
		NAME	DATE	CHKD	DATE	VENT & DRAIN FOR LINE 2" & ABOVE							
DSGN													
DRWN													
APPROVED													
6		5		4		3				2		1	
										SCALE : N.T.S			
										DRG NO MNGI/PLANG/ STEEL/31			

6

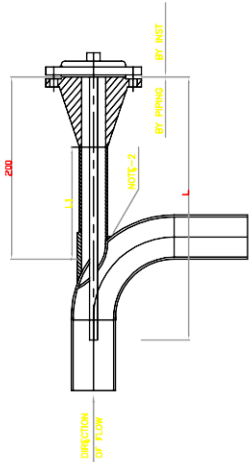
5

4

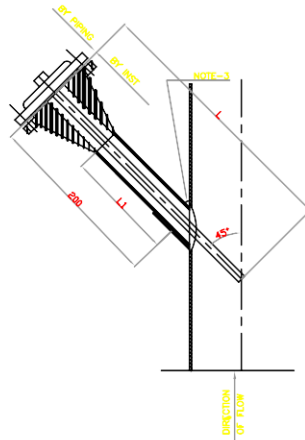
3

2

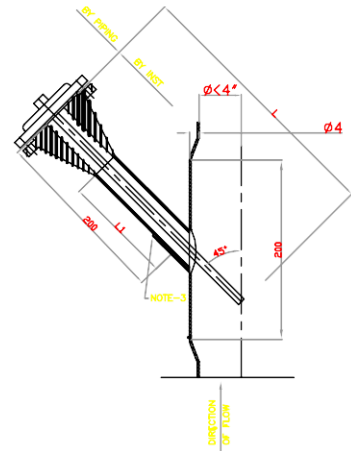
1



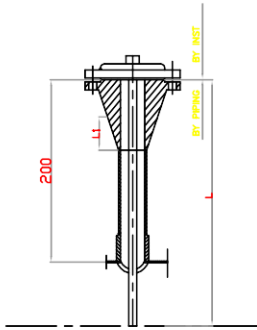
TYPE TW -6



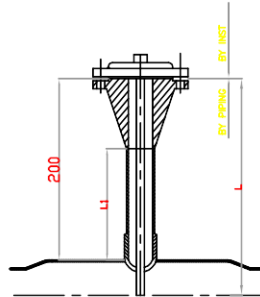
TYPE TW -7



TYPE TW -9



TYPE TW -8



TYPE TW -10

LINE DIA	1.5" FLANGED WELD
4"	200
6"	300
8"	300
10"	300
12"	300
14"	300
16"	400
18"	400
20" & LARGER	500
VESSELS	AS REQUIRED

6. ELABOLW MIN. 4"Ø OR LARGER
7. VERTICAL LINE 4"Ø OR LARGER
8. HORIZONTAL LINE 4"Ø OR LARGER
9. VERTICAL LINE LESS THAN 4"
10. HORIZONTAL LINE DIA LESS THAN 4"

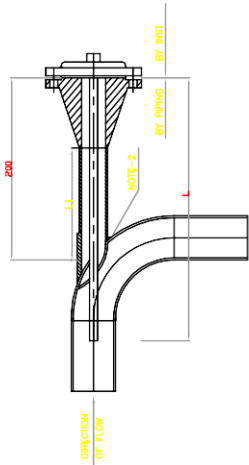
NOTES:

1. BOLTS, NUTS AND GASKETS BY PIPING.
2. MIN. CLERANCE FOR REMOVAL BY PIPING.
3. COUPLING TO SPECIAL LENGTH.

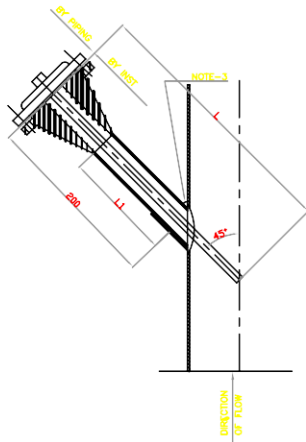
REV. NO.	DATE	DESCRIPTIONS	BY	APPRD	REFERECEES	DRW. NO.

SECTION : P&PD

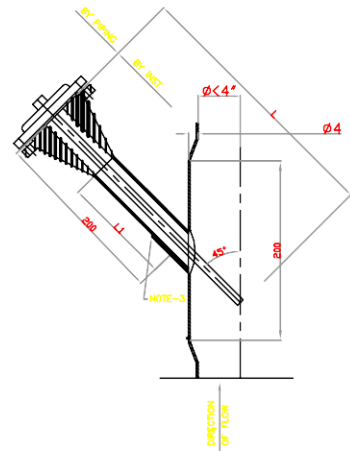
NAME	DATE	CHKD	DATE	WELLS INSTALLATION	SCALE : N.T.S
DSGN				1 1/2" DIA TAPS	
DRWN					
APPROVED				DRG. NO. MNGI/PLANG/ STEEL 32	



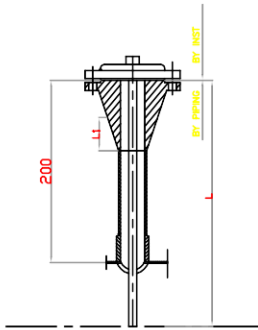
TYPE TW-6



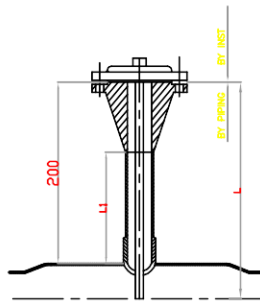
TYPE TW-7



TYPE TW-9



TYPE TW-8



TYPE TW-10

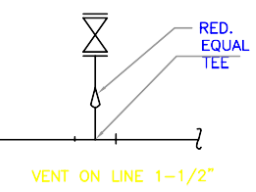
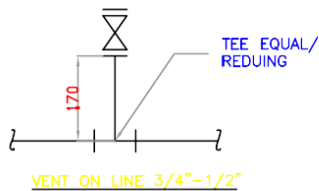
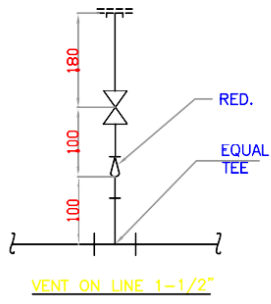
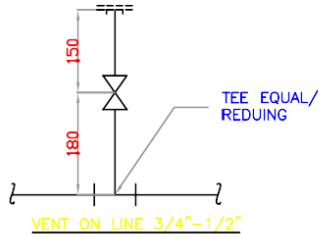
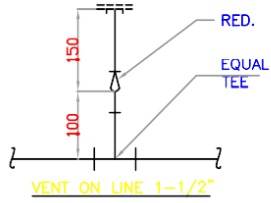
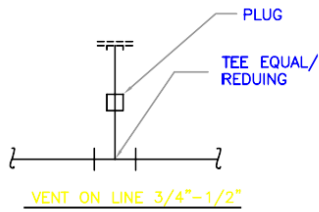
LINE	DIA	1.5" FLANGED WELD
4"	200	
6"	300	
8"	300	
10"	300	
12"	300	
14"	300	
16"	400	
18"	400	
20" & LARGER	500	
VESSLS	AS REQUIRED	

6. ELABOLW MIN. 4"Ø OR LARGER
7. VERTICAL LINE 4"Ø OR LARGER
8. HORIZONTAL LINE 4"Ø OR LARGER
9. VERTICAL LINE LESS THAN 4"
10. HORIZONTAL LINE DIA LESS THAN 4"

NOTES:

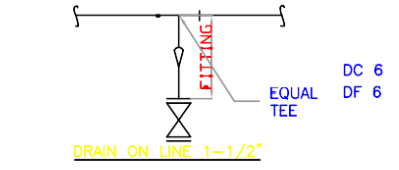
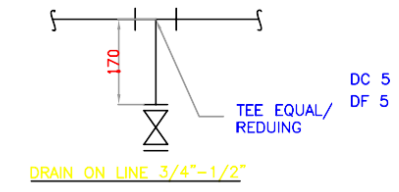
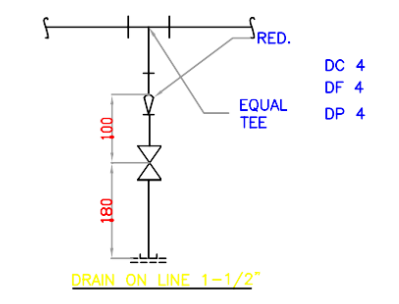
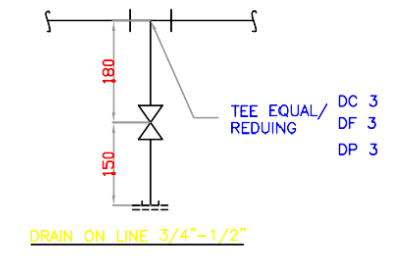
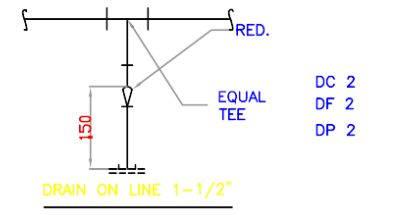
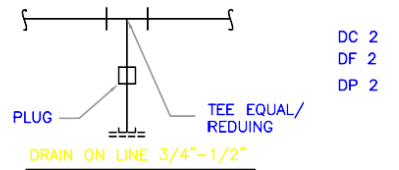
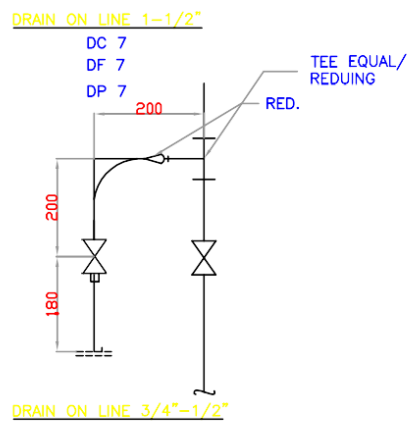
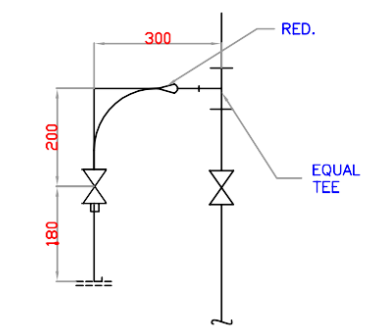
1. BOLTS, NUTS AND GASKETS BY PIPING.
2. MIN. CLERANCE FOR REMOVAL BY PIPING.
3. COUPLING TO SPECIAL LENGTH.

REV. NO.	DATE	DESCRIPTIONS	BY	APPRD	REFERECEES	DRW. NO.
		REVISIONS				
SECTION : P&PD						
DSGN	NAME	DATE	CHKD	DATE	WELLS INSTALLATION	
DRWN					1 1/2" DIA TAPS	
APPROVED				SCALE : N.T.S.		
				DRG. NO. MNGI/PLANG/ STEEL 32		



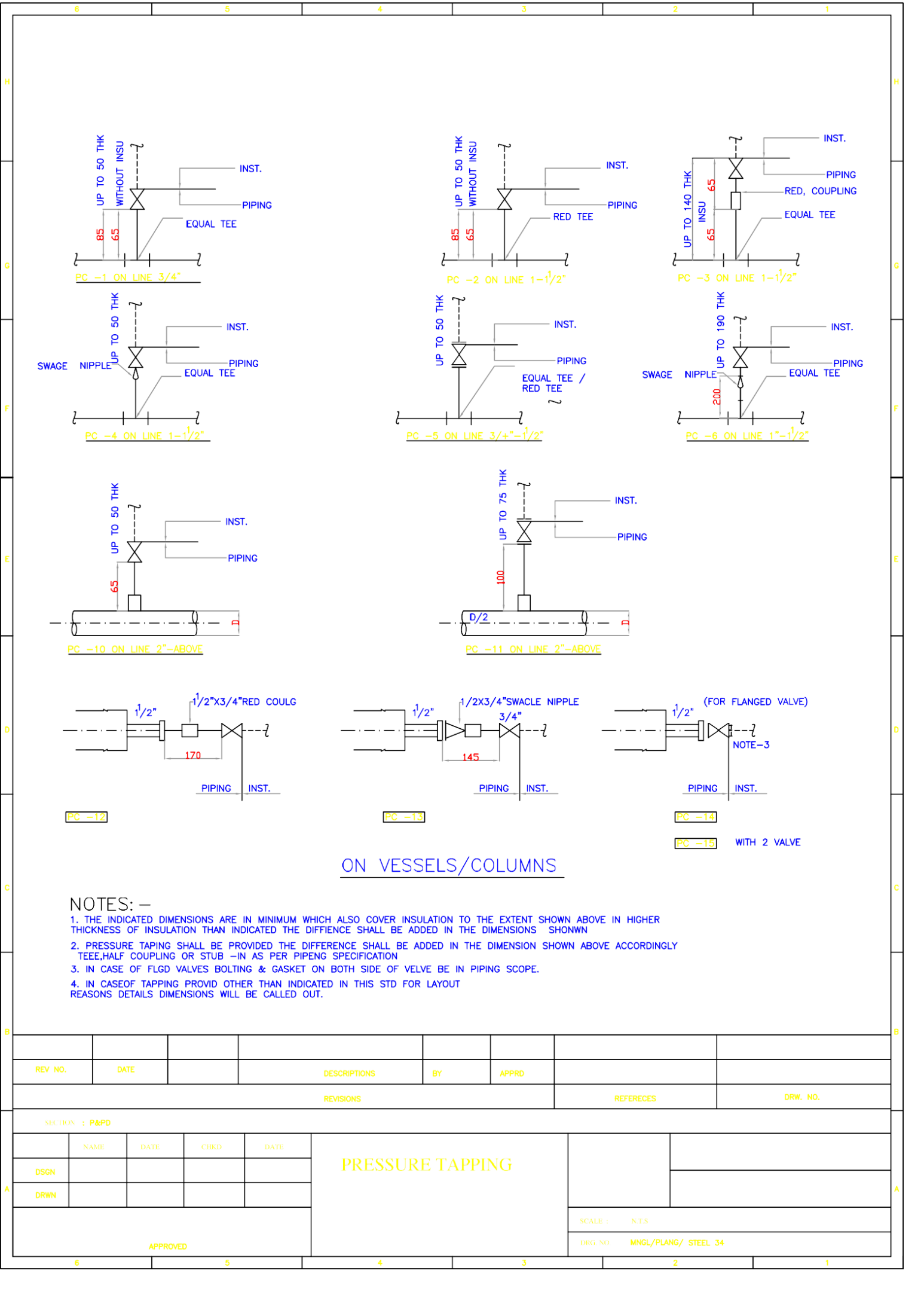
NOTES:-

1. DIMENSIONS ARE VALID FOR 50mm (MAX) THICKNESS INSULATION FOR HIGHER INSULATION THICKNESS IN CASE DIMENSIONS AS PREQUIRED.
2. VENTS & DRAINS SHALL BE PROVIDED WITH GATE GLOBE OR PLUG VALVE
3. LEGEND V=VENT D=DRAIN C=CAP F=FLANGE R=REDUCER
4. PLUGGED END OF VALVE OR FITTING SHALL BE THREADED



REV. NO.	DATE	DESCRIPTIONS	BY	APPRD	REVISED	REFRECES	DRW. NO.
REVISIONS							

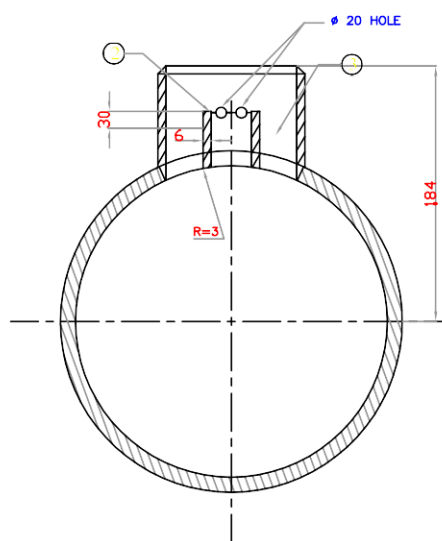
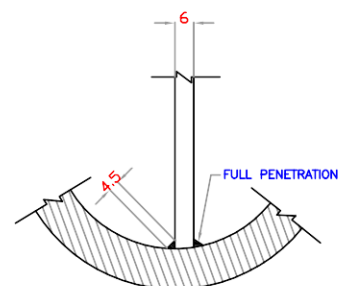
SECTION : P&PD							
	NAME	DATE	CHKD	DATE	WELLS INSTALLATION ON LINES 1 ¹ / ₂ " DIA TAPS		
DSCN							
DRWN							
APPROVED						SCALE : N.T.S	
						DRG. NO. MNGI/PLANG/ STEEL 33	



ON VESSELS/COLUMNS

- NOTES: -
- 1. THE INDICATED DIMENSIONS ARE IN MINIMUM WHICH ALSO COVER INSULATION TO THE EXTENT SHOWN ABOVE IN HIGHER THICKNESS OF INSULATION THAN INDICATED THE DIFFIENCE SHALL BE ADDED IN THE DIMENSIONS SHOWN
 - 2. PRESSURE TAPING SHALL BE PROVIDED THE DIFFERENCE SHALL BE ADDED IN THE DIMENSION SHOWN ABOVE ACCORDINGLY TEE,HALF COUPLING OR STUB -IN AS PER PIPENG SPECIFICATION
 - 3. IN CASE OF FLGD VALVES BOLTING & GASKET ON BOTH SIDE OF VELVE BE IN PIPING SCOPE.
 - 4. IN CASEOF TAPPING PROVIDD OTHER THAN INDICATED IN THIS STD FOR LAYOUT REASONS DETAILS DIMENSIONS WILL BE CALLED OUT.

REV. NO.		DATE				DESCRIPTIONS		BY		APPRD		
REVISIONS								REFERECES		DRW. NO.		
SECTION : P&PD												
	NAME	DATE	CHKD	DATE	PRESSURE TAPPING							
DSGN												
DRWN									SCALE : N.T.S		DRG NO. MNGL/PLANG/ STEEL 34	
APPROVED												

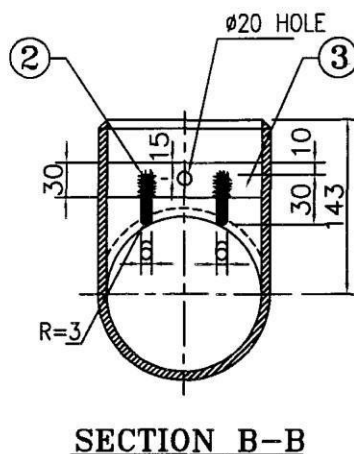
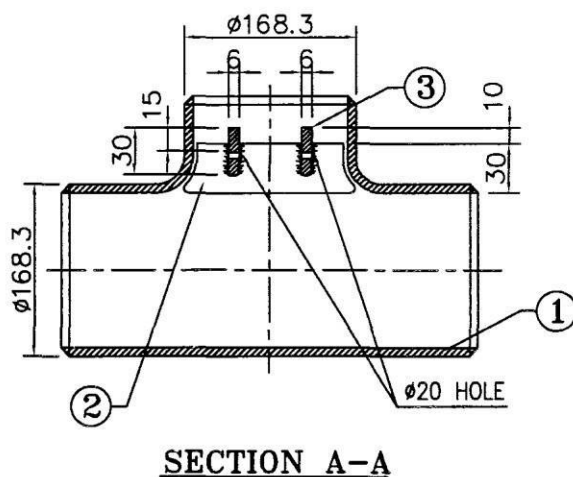
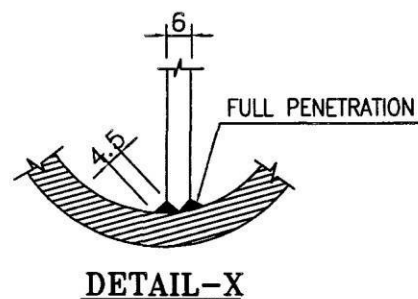
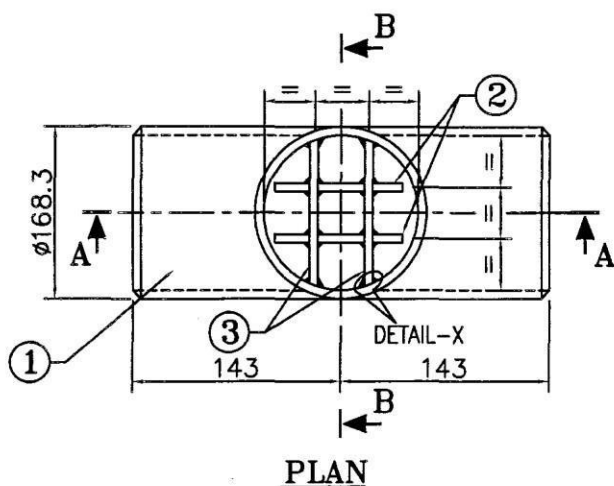


ITEM NO.	DESCRIPTION	QTY.	MATERIAL
1	RED TEE B.W. END PER ASME 16.9 SIZE 10"X10"X4"	1	A 234 WP Sdh, stdXsdh thk(mm)
2	GUDE BAR	2	ASTMA-36/ ASTMA-516Gr.70
3	CONNECTING PLATE	2	ASTMA-36/ ASTMA-516Gr.70

- | | | |
|------------------------|---|-------------|
| 1. SERVICE | : | NATURAL GAS |
| 2. DESIGN PRESSURE | : | 19 KG/cm |
| 3. DESIGN TEMP. | : | 0 TO 65°C |
| 4. CORROSION ALLOWANCE | : | 1.5mm |
| 5. HYDRO-TEST PRESSURE | : | 28.5 Kg/cm |

1. RUN PIPE : $\phi 10''(273)$ WT 6.4mm.
2. BRANCH PIPE : $\phi 4(114.3)$ XWT ,6mm
API 5L Gr.B

REV. NO.		DATE		DESCRIPTIONS		BY		APPRD		REVERECES		DRW. NO.	
SECTION : P&PD													
DSGN		DATE		CHKD		DATE		MAHARASTRA NATURAL GAS LTD CNG & CITY GAS DISTRIBUTION PROJECT FOR PUNE - CITY BARRAED TEES		SCALE : N.T.S DRG NO. MNGL/PLANG/ STEEL 37			
DRWN		DATE		CHKD		DATE							
APPROVED													



QUANTITY - As per SOR

NOTES:-

1. THE BARRED TEE IS INTENDED TO BE SUITABLE FOR SCRAPER PIGS AND USE IN LINE FOR BIRDIRECTIONAL GAS FLOW.
2. THE GUIDE BARS SHALL BE EXTENDED INTO THE RUN SO THAT THEY GET FLUSHED WITH THE INSIDE DIAMETER OF THE SAME.
3. THE CONTOUR OF THE GUIDE BARS SHALL BE SUCH THAT THEY GO ALONG THE INTERNAL SHAPE OF THE BRANCH.
4. THE CONNECTING PLATE SHALL BE WELED WITH THE STRAIGHT PORTION OF THE BRANCH.
5. READ THIS DRAWING TOGETHER WITH MNGI TECHNICAL SPECIFICATION NO. MNGI/Spec/TS/119 FOR BARRED TEES
6. THE BARRED TEE IS INTENDED TO BE SUITABLE FOR UNDER GROUND INSTALLATION.
7. BUTT-WELD ENDS SHALL BE BEVELED IN ACCORDANCE WITH MSS-SP-75 / B 16.25 AND SHOULD MATCH WITH RUN PIPE AND BRANCH PIPE'S WALL THICKNESS AS INDICATED IN CONNECTING PIPE DETAILS.

ITEM NO.	DESCRIPTION	QTY.	MATERIAL
1	TEE B.W. END AS PER ASME16.9 SIZE 6"x6"x6"	1	A 234 WPB, SCH. STD. x SCH. STD. THK.(MIN.)
2	GUIDE BAR	2	ASTMA - 36 / ASTMA - 516 Gr. 70
3	CONNECTING PLATE	2	ASTMA - 36 / ASTMA - 516 Gr. 70

DESIGN DATA

1. SERVICE : NATURAL GAS
2. DESIGN PRESSURE : 19 Kg/cm²
3. DESIGN TEMP. : 0 TO 65°C
4. COESSION ALLOWANCE : 0.5mm
5. HYDRO-TEST PRESSURE : 28.5 Kg/cm²

CONNECTING PIPE DETAILS

1. RUN PIPE : 6"(168.3) x WT 6.4 mm, API 5L GR. B
2. BRANCH PIPE : 6"(168.3) x WT 6.4 mm, API 5L GR. B

REV NO	DATE	ZONE	DESCRIPTIONS	BY	APPRD	REFERENCES	DRG. NO.
			REVISIONS				



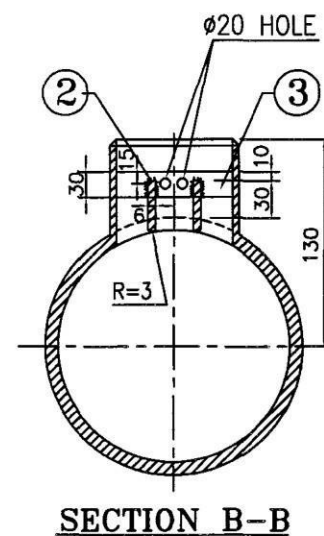
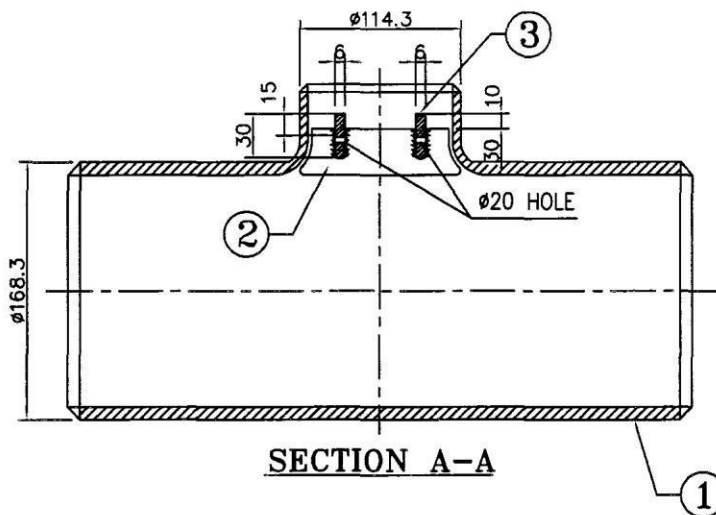
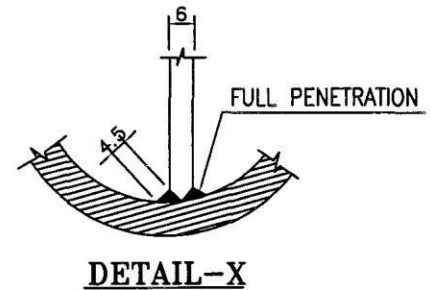
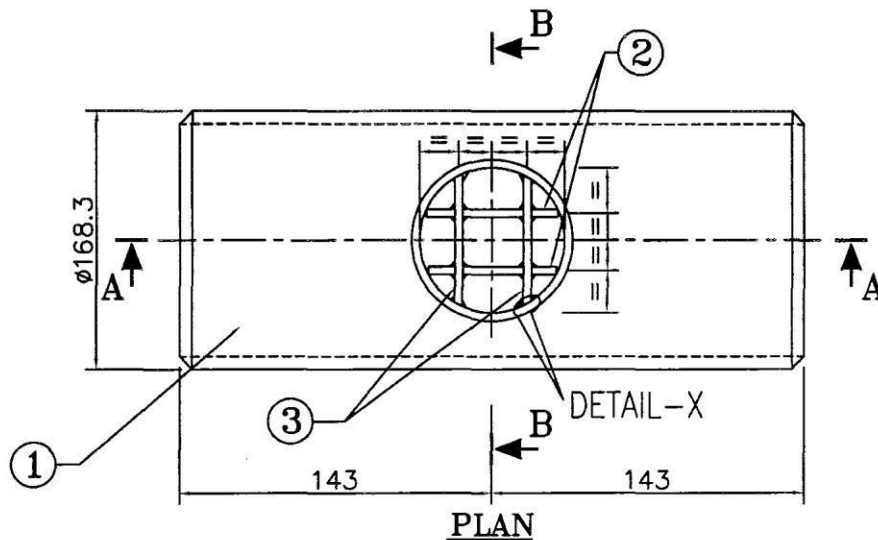
महाराष्ट्र नैचुरल गॅस लिमिटेड
MAHARASTRA NATURAL GAS LTD

**CNG & CITY GAS DISTRIBUTION
PROJECT FOR PUNE CITY**

BARRED TEES

SCALE : NTS

DRG.NO. MNGI/Plng./Spec/138



QUANTITY - As per SOR

NOTES:-

1. THE BARRED TEE IS INTENDED TO BE SUITABLE FOR SCRAPPY PIGS AND USE IN LINE FOR BIRDIRECTIONAL GAS FLOW.
2. THE GUIDE BARS SHALL BE EXTENDED INTO THE RUN SO THAT THEY GET FLUSHED WITH THE INSIDE DIAMETER OF THE SAME.
3. THE CONTOUR OF THE GUIDE BARS SHALL BE SUCH THAT THEY GO ALONG THE INTERNAL SHAPE OF THE BRANCH.
4. THE CONNECTING PLATE SHALL BE WELDED WITH THE STRAIGHT PORTION OF THE BRANCH.
5. READ THIS DRAWING TOGETHER WITH MNGE'S TECHNICAL SPECIFICATION NO MNGE/Steel/TS/19
6. THE BARRED TEE IS INTENDED TO BE SUITABLE FOR UNDER GROUND INSTALLATION.
7. BUTT-WELD ENDS SHALL BE BEVELED IN ACCORDANCE WITH MSS-SP-75 / B 16.25 AND SHOULD MATCH WITH RUN PIPE AND BRANCH PIPE'S WALL THICKNESS AS INDICATED IN CONNECTING PIPE DETAILS.

ITEM NO.	DESCRIPTION	QTY.	MATERIAL
1	RED. TEE B.W. END AS PER ASME16.9 SIZE 6"x6"x4"	1	A 234 WPB, Sch. Std. X Sch. XS Thk. (Min.)
2	GUIDE BAR	2	ASTMA - 36 / ASTMA - 516 Gr. 70
3	CONNECTING PLATE	2	ASTMA - 36 / ASTMA - 516 Gr. 70

DESIGN DATA

1. SERVICE : NATURAL GAS
2. DESIGN PRESSURE : 19 Kg/cm²
3. DESIGN TEMP. : 0 TO 65°C
4. CORROSION ALLOWANCE : 1.5mm
5. HYDRO-TEST PRESSURE : 28.5 Kg/cm²

CONNECTING PIPE DETAILS

1. RUN PIPE : #6"(168.3) x WT 6.4 mm. API 5L Gr. B
2. BRANCH PIPE : #4"(114.3) x WT 6.4 mm. API 5L Gr. B

REV NO	DATE	ZONE	DESCRIPTIONS	BY	APPROD	REFERENCES	DRG. NO.
			REVISIONS				



महाराष्ट्र नैचुरल गॅस लिमिटेड
MAHARASTRA NATURAL GAS LTD

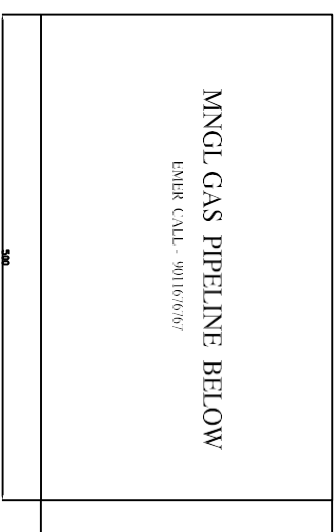
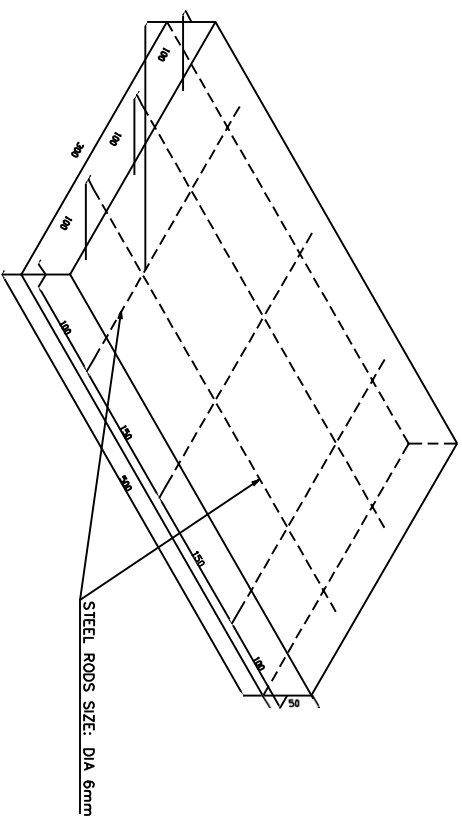
**CNG & CITY GAS DISTRIBUTION
PROJECT FOR PUNE CITY**



BARRED TEES

SCALE : NTS

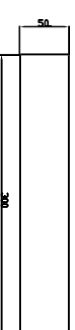
DRG. NO MNGE/Ping/Steel/39



PLAN



FRONT VIEW

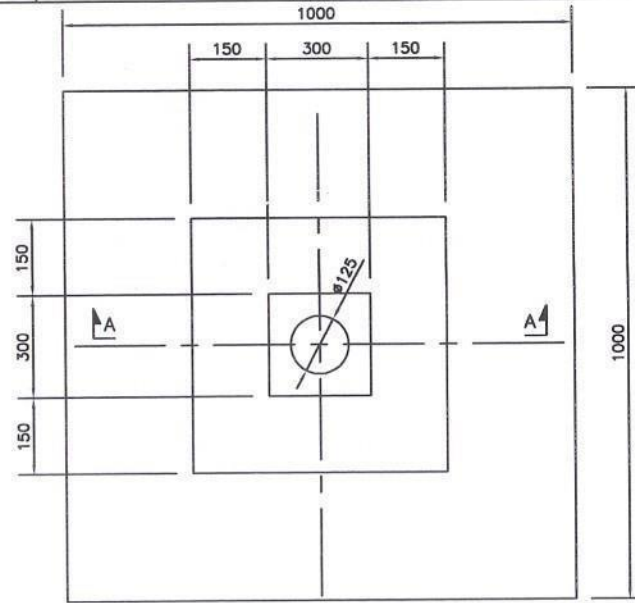


SIDE VIEW

NOTES:

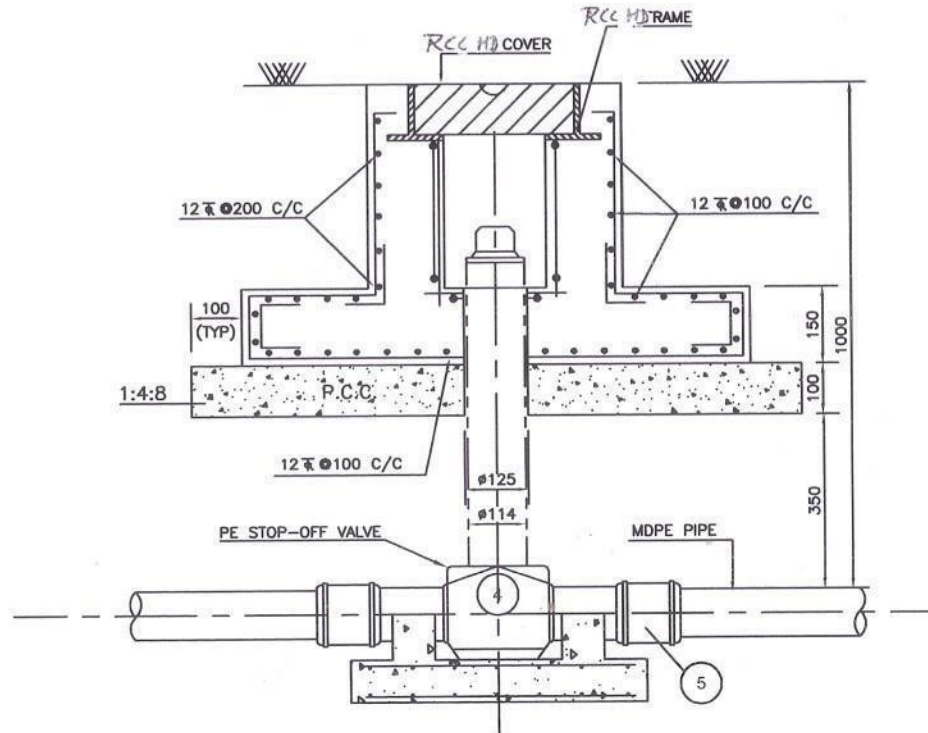
1. ALL DIMENSION ARE IN MM UNLESS OTHERWISE SPECIFIER SPECIFIED.

2. CONCRETE FOR MARKER SHALL BE M-20.



NOTES -

1. ALL DIMENSIONS ARE IN MM.
2. THE CONCRETE SHALL HAVE A CHARACTERISTIC STRENGTH OF 20 N/MM²
3. THE COVER FOR REINFORCEMENT SHALL BE 50 MM ON OUTER FACES AND 50 MM ON INNER FACE.
4. THE SFRC COVER SHALL HAVE REINFORCED CONCRETE OF GRADE M-35 CONFORMING TO IS:456-1978.
5. DEBRIS BACKFILL TO BE REMOVED & GOOD EARTH TO BE FILLED IN AREA OF 1.5 M x 1.5 M WITH PROPER COMPACTION AND CONSOLIDATION BY WATER.
6. GASKET OF RUBBER OR ANY OTHER EQUIVALENT MATERIAL OF MATCHING DIMENSIONS SHALL BE SUPPLIED & USED BY THE CONTRACTOR TO PREVENT INGRESS OF WATER INTO THE VALVE PIT.
7. 75mm THICK PCC(1:2:4) OF DIMENSION 300mm X 300mm FOR VALVE OF SIZES FROM 63mm TO 125mm SHOULD BE PROVIDED FOR SUPPORTING THE PE STOP OFF VALVE AT THE BASE.
8. RUBBER SHEET OF MIN. 6mm THICK SHOULD BE PROVIDED BETWEEN BASE OF THE VALVE AND PCC TOP SURFACE.



SECTION A-A

MAHARASHTRA NATURAL GAS LIMITED			
DRAWN BY PLNG	DATE 06/05/04	TITLE - RCC PIT FOR PE STOP-OFF VALVE(Ø63 TO 125 mm)	
CHECKED BY	DATE		
APPRD. BY	DATE	DRAWING NO: MNG/ENG/CIVIL/10A	REV. 0

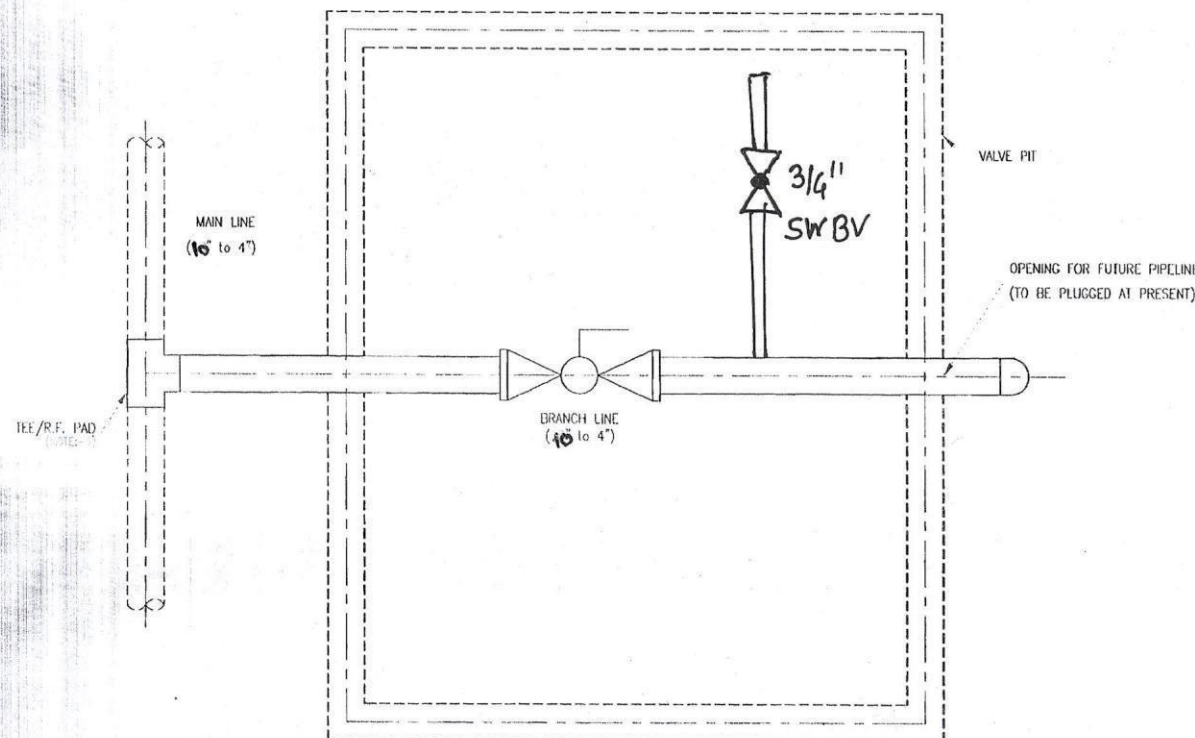
NOTES

1. TOP OF THE PIPE SHALL BE AT MINIMUM 1.2M DLPIT.
2. APPROXIMATE SIZE OF THE PIT WILL BE 2Mx2M & 2Mx1.5M. IT DEPENDS ON THE SITE CONDITION.
3. BRANCHING CONNECTIONS (TEE/ R.F. PAD) SHALL DEPEND UPON THE MAIN LINE & BRANCH LINE.

LEGEND



BW BALL VALVE



PLAN

STATUS

TITLE: GENERAL ARRANGEMENT DRAWING FOR FUTURE TAP-OFF POINTS

CLIENT: MING L. PUNE

PROJECT: CGD PUNE

MING L. PUNE / Steel / 40



LEGENDS:

- | | | |
|------|------|-------------------------------|
| ℄ | ---- | CENTRE LINE |
| OG℄ | ---- | ORIGINAL GROUND LEVEL |
| NG℄ | ---- | NATURAL GROUND LEVEL |
| EL | ---- | ELEVATION |
| FF℄ | ---- | FINISHED FLOOR LEVEL |
| TYP. | ---- | TYPICAL |
| LVL. | ---- | LEVEL |
| TH℄. | ---- | THICK / THICKNESS |
| DET. | ---- | DETAIL |
| RCC | ---- | REINFORCED CEMENT
CONCRETE |
| PCC | ---- | PLAIN CEMENT CONCRETE |

NOTES:

- 1) IF DOUBT ASK, DO NOT SCALE THE DRAWING.
- 2) BEARING CAPACITY = 400 KN/SQM IS CONSIDERED FOR DESIGN
- 3) GRADE OF MATERIAL:-
CONCRETE:- M25 WITH 20MM DOWN GRADED AGGREGATES.
STEEL:- FE500 DEFORMED BARS AS PER IS-1786.

ENGINEERING REFERENCE

CONSTRUCTION REFERENCE

HOLD

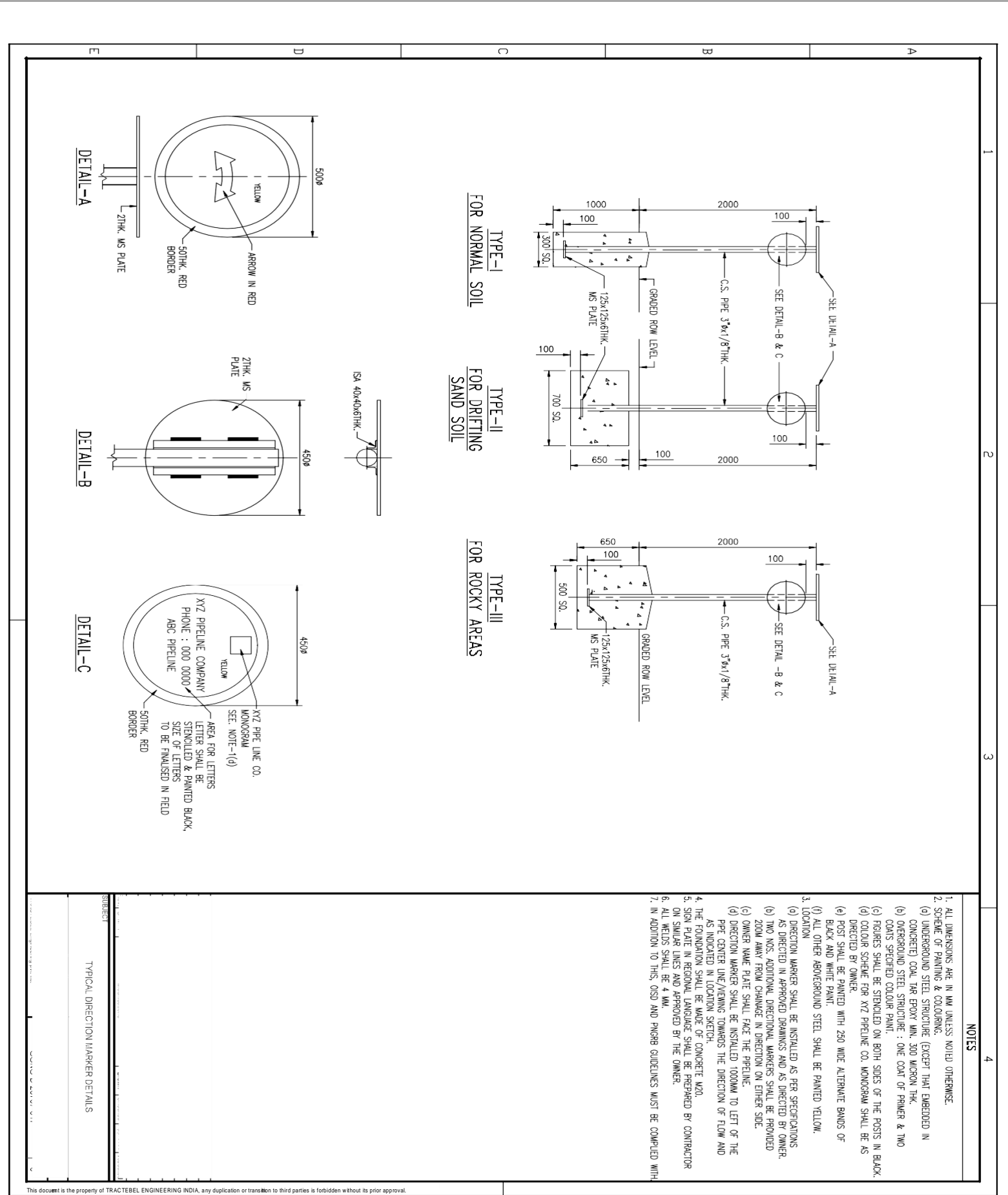
--NIL--

REVISION STATUS

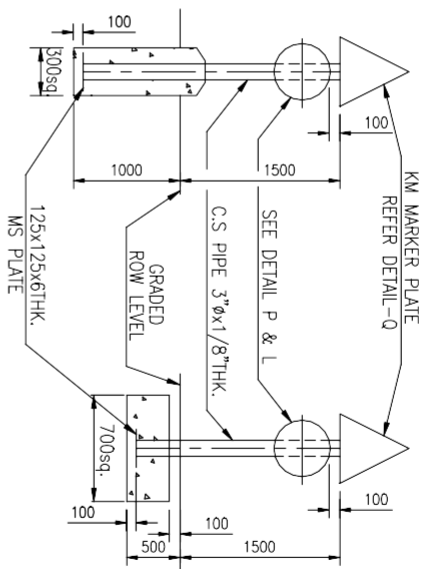
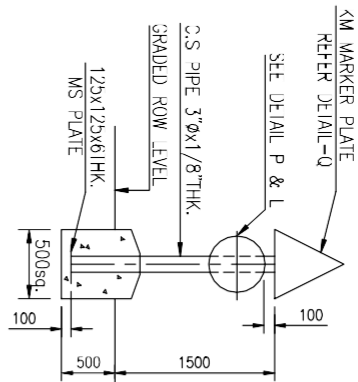
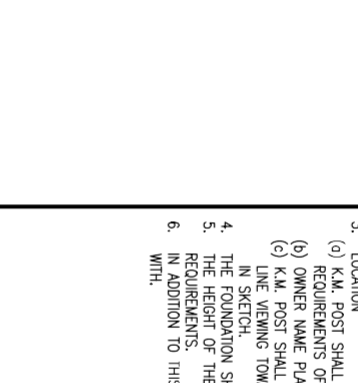
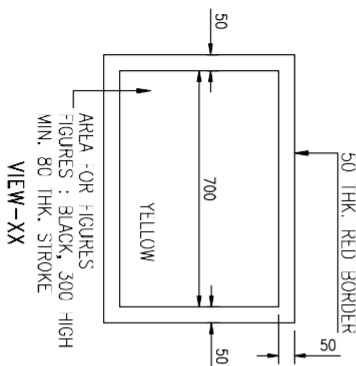
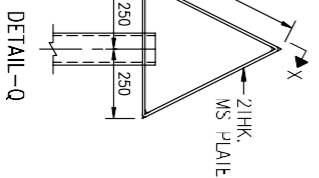
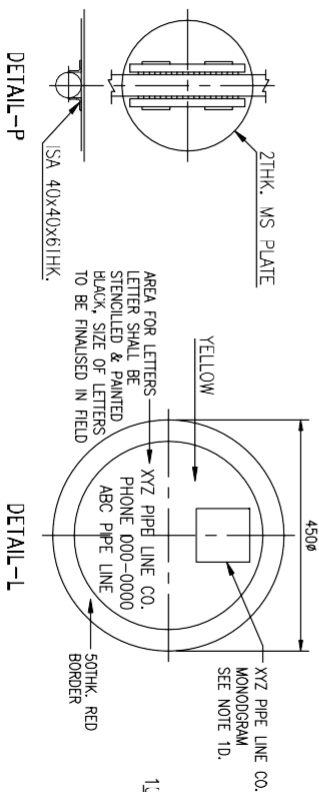
DO NOT SCALE

FOR RO ISSUE ONLY			ISSUE	REVSIONS	DRN	CLEARED				APPD	DATE	FILE NAME :33339999	<div>MAHARASHTRA NATURAL GAS LTD.</div> <div>CONSULTANT :</div> <div>PROJECT :</div>	CHAMBER RC DETAILS					
CLEARED						CHEM	CIVIL	ELEC	I&C					MECH	SCALE: NTS	APPROVED PVP		DATE (RO ISSUE)	
DEPT	SIGNATURE	DATE													OFFICE-DISC:		DATE (CURRENT ISSUE)		
CIVIL															DRN: SKL	DWG	ECS-2019-MNGL-DK-02-RC-07	ISSUE RO	
															CHD: AM				

Steel Markers Drawing



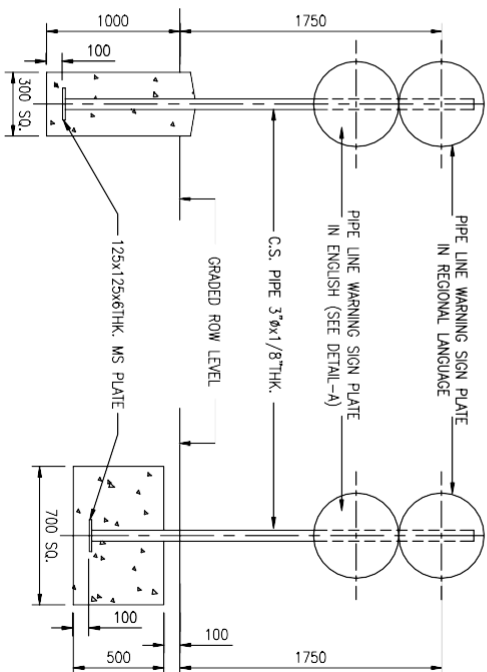
1. ALL DIMENSIONS ARE IN MM UNLESS NOTED OTHERWISE.
2. SCHEME OF PAINTING & COLOURING.
 - (a) UNDERGROUND STEEL STRUCTURE (EXCEPT THAT EMBEDDED IN CONCRETE) COAT TAR EPOXY MIN. 300 MICRON THK.
 - (b) OVERGROUND STEEL STRUCTURE : ONE COAT OF PRIMER & TWO COATS SPECIFIED COLOUR PAINT.
 - (c) FIGURES SHALL BE STENCILED ON BOTH SIDES OF THE POSTS IN BLACK.
 - (d) COLOUR SCHEME FOR XYZ PIPELINE CO. MONOGRAM SHALL BE AS DIRECTED BY OWNER.
 - (e) POST SHALL BE PAINTED WITH 250 WIDE ALTERNATE BANDS OF BLACK AND WHITE PAINT.
3. LOCATION
 - (a) K.M. POST SHALL BE INSTALLED AT EVERY KILOMETERS AS PER REQUIREMENTS OF CONTRACT AND AS DIRECTED BY OWNER.
 - (b) OWNER NAME PLATE SHALL FACE THE PIPELINE.
 - (c) K.M. POST SHALL BE 500MM TO THE LEFT OF THE PIPE CENTRE LINE VIEWING TOWARDS THE DIRECTION OF FLOW AND AS INDICATED IN SKETCH.
 4. THE FOUNDATION SHALL BE MADE OF CONCRETE M20.
 5. THE HEIGHT OF THE K.M. POST MAY BE VARIED TO SUIT FIELD REQUIREMENTS.
 6. IN ADDITION TO THIS, OISD AND PNGRB GUIDELINES MUST BE COMPLIED WITH.

TYPE-I
FOR NORMAL SOILTYPE-II
FOR DRIFTING SAND SOILTYPE-III
FOR ROCKY AREAS

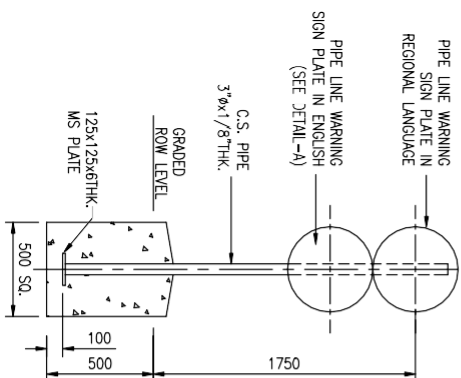
TYPICAL K.M. POST DETAILS

NOTES

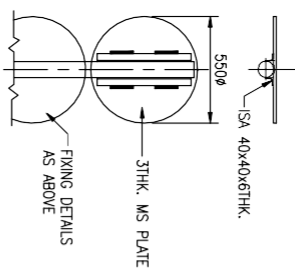
1. ALL DIMENSIONS ARE IN MM UNLESS NOTED OTHERWISE.
2. SCHEME OF PAINTING & COLOURING.
- (a) UNDERGROUND STEEL STRUCTURE EXCEPT THAT EMBEDDED IN CONCRETE) COAL TAR EPOXY MIN. 300 MICRON THK.
- (b) OVERGROUND STEEL STRUCTURE : ONE COAT OF PRIMER & TWO COATS SPECIFIED COLOUR PAINT.
- (c) ALL LETTERS EXCEPT WARNING SHALL BE PAINTED BLACK..
- (d) COLOUR SCHEME FOR XYZ PIPELINE CO. MONOGRAM SHALL BE AS DIRECTED BY OWNER.
- (e) POST SHALL BE PAINTED WITH 250 WIDE ALTERNATE BANDS OF BLACK AND WHITE PAINT.
- (f) ALL OTHER ABOVEGROUND STEEL SHALL BE PAINTED YELLOW.
3. LOCATION
- (i) THE PIPE LINE WARNING SIGN SHALL BE INSTALLED IN ACCORDANCE WITH CONTRACT REQUIREMENTS AND AS DIRECTED BY OWNER. IT SHALL BE INSTALLED TO THE LEFT OF THE PIPE CENTER LINE, VIEWING IN THE DIRECTION OF FLOW AT 300MM FROM PIPELINE O.D. AND THE WARNING SIGN PLATE SHALL FACE THE UTILITY BEING CROSSED.
- (b) THE WARNING SIGN PLATE MAY BE MOUNTED ON VENT PIPES OR KM POST WHERE EVER POSSIBLE.
- (c) THE FOUNDATION SHALL BE MADE OF CONCRETE M20.
4. SIGN PLATE IN REGIONAL LANGUAGE SHALL BE PREPARED BY CONTRACTOR ON SIMILAR LINES AND APPROVED BY THE OWNER.
5. IN ADDITION TO THIS, OSD AND PUNGB GUIDELINES MUST BE COMPLIED WITH.



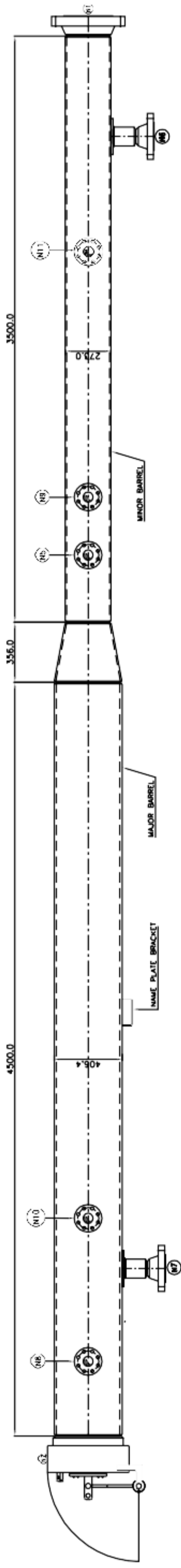
FOR NORMAL SOIL



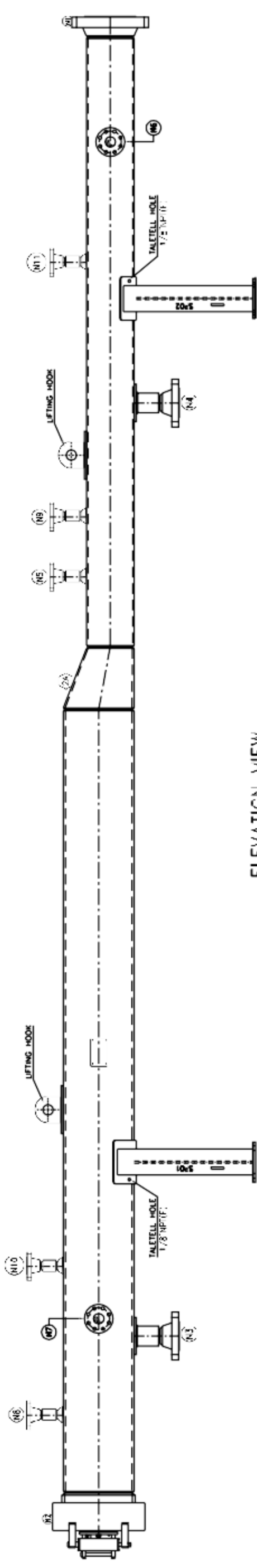
FOR ROCKY AREAS

DETAIL-A

WARNING SIGN PLATE



PLAN VIEW



ELEVATION VIEW

DESIGN & MFG. CODE		DESIGN DATA
BARREL SIZE (MAJOR x MINOR)		ASME SEC VIII DIV. 1
ORIENTATION		16" x 10" NF - 6000
DESIGN TEMPERATURE(°C)		HORIZONTAL
DESIGN FACTOR		0 TO 65°
DESIGN PRESSURE		0.72
CORROSION ALLOWANCE		92.0
HYDROTEST PRESSURE		3 mm
		NATURAL GAS
		138.0 (1.5 x DESIGN PRESSURE)

NOZZLE	SERVICE	SIZE	QTY.	CLASS	TYPE
N1	NECK FLANGE	16"	1 NOS.	6000	WHRF
N2	DOCK (END CLOSURE)	16"	1 NOS.	6000	WHRF
N3	DRAIN (MAJOR BARREL)	4"	1 NOS.	6000	WHRF
N4	DRAIN (MINOR BARREL)	4"	1 NOS.	6000	WHRF
N5	PRESSURE INDICATOR	2"	1 NOS.	6000	WHRF
N6	KICKER LINE (MINOR BARREL)	4"	1 NOS.	6000	WHRF
N7	BY PASS LINE (MAJOR BARREL)	4"	1 NOS.	6000	WHRF
N8	VENT	2"	1 NOS.	6000	WHRF
N9	PIC SIGNALLER	2"	1 NOS.	6000	WHRF
N10	PRESSURE INDICATOR	2"	1 NOS.	6000	WHRF
N11	PURGE CONNECTION	2"	1 NOS.	6000	WHRF



DRAWING PREPARED BY:

REV.	DATE	SUBJECT OF REVISION	APP.	VVC	INL. SIGN.	INL. SIGN.	APPROVED
00	08.10.2024	TYPICAL DRAWING					

REVISIONS

CLIENT :	
MANUFACTURER :	COI P/L PL 3 / II, A
PROJECT :	
EQUIPMENT :	B DIRECTION SCRAPLER LAUNCHER/RECEIVER, 16" x 10" - 5000
DWG. TITLE :	TYPICAL DRAWING
PO. No.:	
DATE :	
SCALE :	AS
DWG. No. :	
REV. :	
SHEET :	1 OF 1